



Goldblatt®

SINCE 1885

Professional Performance. *Guaranteed.*

CONCRETE & MASONRY TOOLS • DRYWALL TOOLS • PAINT TOOLS • TILE TOOLS
POWER TOOLS • WORK LIGHTS • HAND TOOLS • LASERS • SAFETY GEAR



GOLDBLATT TOOLS

Goldblatt's tradition of Quality, Innovation and Satisfaction started with Henry Goldblatt. Born in 1855, Henry emigrated from Russia with dreams of opening his own business in the expanding American West. At the age of 29, he founded the H. Goldblatt Tool Company in Kansas City, MO. At the time, this frontier town was booming and Henry sold his products directly to tradesmen and through the mail. Soon, Goldblatt published a tool catalog that successfully promoted his products nationwide. Quickly the Goldblatt reputation and business grew. Today, in over 100 countries around the world, Goldblatt provides high quality trade tools to masonry, concrete, drywall, tile, and paint pros-with even more to come. We do it with a simple idea in mind, to create the highest quality products for the trade professional that are also accessible and affordable for the inspired homeowner/do-it-yourselfer. A strong commitment to Quality, Innovation, and Satisfaction has been the cornerstone of the Goldblatt brand for over 130 years and that commitment still makes Goldblatt the right tool for the job. With a Goldblatt tool in your hand you can be assured of professional results every time. Henry would be proud.

INDEX

CONCRETE TOOLS	1
MASONRY TOOLS	13
DRYWALL TOOLS	21
PAINT TOOLS	37
TILE TOOLS	39
POWER TOOLS	73
WORK LIGHTS	75
HAND TOOLS	81
LASER TOOLS	86
LEVELS	90
SAFETY GEAR	92



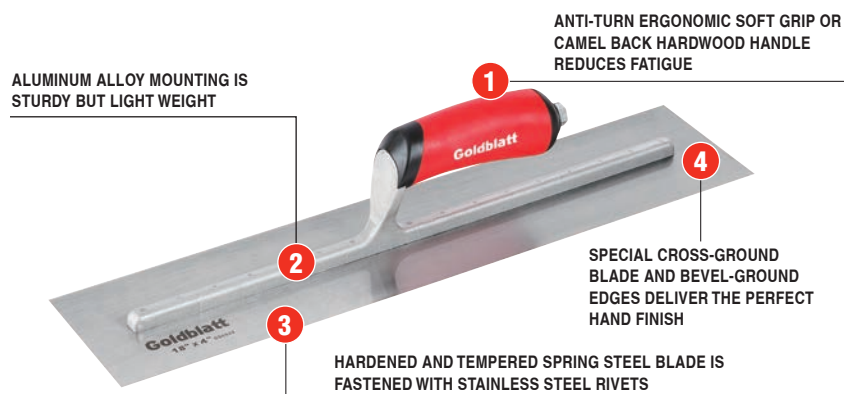
Welcome to Goldblatt Tools

**A HERITAGE OF QUALITY,
INNOVATION, AND SATISFACTION**

CHOOSE GOLDBLATT TROWELS FOR PROFESSIONAL RESULTS!

**Ultra Light
Ultra Strong
Well-balanced**

Goldblatt Pro series concrete finishing trowels are designed for the professional tradesman. Made of hardened and tempered spring steel for durability, these trowels have a special cross-ground face and bevel-ground edges to deliver a perfect hand finish. The blade is secured to the mounting by stainless steel rivets. Constructed with an ultra-strong aluminum alloy mounting, these trowels are some of the lightest weight finishing trowels on the market. The ergonomic pro soft grip handle or camel back hardwood handle ensure a firm, comfortable grip.



PRO FINISHING TROWEL

- Hardened and tempered spring steel bladed is fastened with stainless steel rivets
- Special cross-ground blade and bevel-ground edges deliver the perfect hand finish

Model#	Size-in.	Size-mm	Handle
G06941	20 x 4	508 x 102	
G06942	18 x 4	457 x 102	
G06943	16 x 4	406 x 102	
G06944	14 x 4	356 x 102	
G06113	12 x 4	305 x 102	



PRO STAINLESS STEEL POOL TROWEL

- Made of flexible stainless steel, these short-shanked trowels will bend to the radius needed for almost any pool

Model#	Size-in.	Size-mm	Handle
G06946	16 x 4-1/2	406 x 114	
G06222	14 x 4	356 x 102	



PRO PLASTER TROWEL

- Hardened and tempered stainless steel blade is fastened with stainless steel rivets
- Flat blade makes application easier and helps achieve a consistent finish



Model#	Size-in.	Size-mm	Handle
G03463	12 x 5	305 x 127	

PRO MINI TROWEL

- Great for window sills, closets, small areas and any tough-to-reach jobs



Model#	Size-in.	Size-mm	Handle
G06945	8 x 3	203 x 76	





FINISHING TROWEL

- Made of durable spring steel and fused rivet mountings, this trowel will last for years to come
- Aluminum alloy mounting is very strong but light weight

Model#	Size-in.	Size-mm	Handle
Spring Steel			
G06531	20 x 4	508 x 102	
G06527	18 x 4	457 x 102	
G06948	16 x 4	406 x 102	
G06949	14 x 4	356 x 102	
G06512	12 x 4	305 x 102	
G03407	8 x 3	203 x 76	
Stainless Steel			
G02048	16 x 4	406 x 102	

ECONOMY FINISHING TROWEL

- Great for concrete or plaster finishing
- The blade is made of tempered carbon steel
- Rust-resistant aluminum mounting
- Comfortable plastic handle

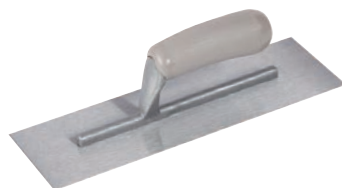
Model#	Size-in.	Size-mm
G06912	16 x 4	406 x 102
G06911	14 x 4	356 x 102
G06910	12 x 4	305 x 102
G03910	11 x 4-1/2	279 x 114



POOL TROWEL

- Made of tempered steel with fused rivet mountings, these short-shanked trowels will bend to the radius needed for almost any pool
- Aluminum alloy mounting is very strong but light weight

Model#	Size-in.	Size-mm	Handle
Stainless Steel			
G06179	16 x 4	406 x 102	
G06177	14 x 4	356 x 102	
G06176	12 x 4	305 x 102	
G06174	10 x 4	254 x 102	
Blue Steel			
G06104	16 x 4	405 x 102	
G06103	14 x 4	355 x 102	



PaceSetter



GROOVERS & EDGERS

Designed to meet the needs of any job, Goldblatt groovers and edgers have a smooth surface to create crisp, sharp edges. Comes with comfortable, soft grip handle.

Bronze - in a class by itself. Durable and heavy enough to cut sharp, clean grooves quickly and easily

Stainless Steel - heavy gauge, long wearing, easy to clean. No rivets to mar surfaces.

BRONZE GROOVER



Model#	Size-in.	R-in.	W-in.	D-in.
G06301	6 x 4-1/2	1/4	5/8	3/4

STAINLESS STEEL GROOVER



Model#	Size-in.	R-in.	W-in.	D-in.	End.
G06200	6 x 3	1/4	1/2	1/2	Flat
G06954	6 x 3	1/4	3/8	3/8	Flat
G06234	6 x 3	1/4	1/2	1/2	Curved

BRONZE EDGER



Model#	Size-in.	R-in.	L-in.
G06952	6 x 2-3/16	1/4	5/8

STAINLESS STEEL EDGER



Model#	Size-in.	R-in.	L-in.
G06235	6 x 3	1/4	3/8
G06953	6 x 3	3/8	3/8

EDGER & GROOVER

- Great for concrete or plaster finishing
- The blade is made of tempered carbon steel
- Comfortable wood handle

Model#	Desc.
G06940	Edger
G06950	Groover



G06940



G06950

PaceSetter



MAGNESIUM FLOATS

Magnesium floats come closer to the action and feel of a wood float than any other metal and Goldblatt magnesium hand floats deliver that "just right" floating action on the slab needed for professional results every time. Goldblatt extrudes or casts the blades to give them a fine, hard, and very dense grain structure that adds superior life to this ultra-light metal. The rounded corners and broken-in face deliver peak performance from the very first use. Fitted with a natural straight grain hardwood handle or comfortable ergonomic soft grip handle, these floats are easier to use and longer lasting than any others.

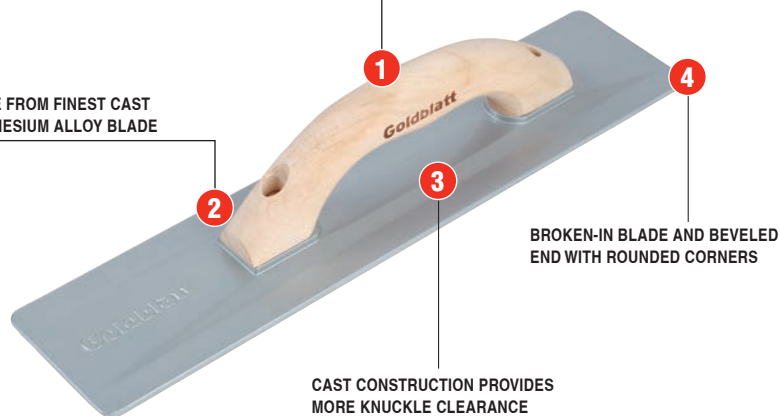
CAST MAGNESIUM FLOAT

- The most popular, widely used Goldblatt float, our cast magnesium float has the strength of a forged tool. With a blade that is hard, long-wearing and extra-light, it is the toughest tool of its kind. Comes with broken-in blade with rounded corners to deliver great results from the first use.

Model#	Size-in.	Size-mm	Handle
G06431	16 x 3-1/2	406 x 89	
G06150	16 x 3-1/2	406 x 89	

PROPER HANDLE POSITION GIVES THE FLOAT PERFECT BALANCE

MADE FROM FINEST CAST MAGNESIUM ALLOY BLADE



BROKEN-IN BLADE AND BEVELED END WITH ROUNDED CORNERS

CAST CONSTRUCTION PROVIDES MORE KNUCKLE CLEARANCE

EXTRUDED MAGNESIUM FLOAT

- High strength extruded magnesium blade
- Broken-in blade and beveled end with rounded corners
- Proper handle position gives the float perfect balance



Model#	Size-in.	Size-mm
G06960	16 x 3-1/4	406 x 83

EXTRUDED ROUND END MAGNESIUM FLOAT

- The rounded corners reduce gouging, making the job quicker and easier



Model#	Size-in.	Size-mm
G06434	16 x 3-1/4	406 x 83

THIN LINE CAST MAGNESIUM FLOAT

- Made from finest cast magnesium alloy blade
- Ends beveled down to 3/16 in. allows work in tightest quarters
- Famous Goldblatt® broken-in blade and rounded corners



Model#	Size-in.	Size-mm
G06050	16 x 3	406 x 76

EXTRUDED ALUMINUM FLOAT

- High strength extruded aluminum alloy blade
- Broken-in blade and beveled end with rounded corners
- Proper handle position gives the float perfect balance



Model#	Size-in.	Size-mm
G06189	15-1/2 x 3	394 x 76

PRO WOOD FLOAT

- Selected hardwood float for strength, durability, and long life
- Used to level and smooth large areas of concrete prior to troweling



Model#	Size-in.	Size-mm	Handle
G06962	12 x 5	305 x 127	

WOOD FLOAT

- Selected hardwood blade
- High impact plastic handle



Model#	Size-in.	Size-mm
G09162	14 x 3-1/2	356 x 89

PaceSetter

RUBBER FLOAT

- Natural foam rubber pad for stucco surface finish
- Pad is securely cemented to high strength aluminum backing
- Ergonomic soft grip handle for easy floating action
- For a coarse or fine texture surface



Model#	Size-in.	Size-mm	Finish
G06042	12 x 4	305 x 102	Coarse
G06967	12 x 4	305 x 102	Fine
G06965	9 x 4	229 x 102	Coarse
G06041	9 x 4	229 x 102	Fine

MOLDED RUBBER FLOAT

- Compact molded rubber pad with dense texture
- Pad is securely cemented to high strength aluminum backing
- Ergonomic soft grip handle for easy floating action
- Ideal for bringing sand to the surface



Model#	Size-in.	Size-mm
G06964	9 x 4	229 x 102

FOAM FLOAT

- Green foam is securely cemented to high strength aluminum backing
- Special coarse green foam
- Used to create a variety of surface textures



Model#	Size-in.	Size-mm
G06968	12 x 5	305 x 127
G06043	9-1/2 x 4	241 x 102

MOLDED RUBBER GROUT FLOAT

- High impact plastic handle
- Compact molded rubber pad with dense texture
- Pad is securely cemented to aluminum backing



PaceSetter

Model#	Size-in.	Size-mm
G02369	9-1/2 x 4	242 x 102

ALUMINUM CONCRETE PLACER

- Ideal for pushing and pulling concrete into place
- All aluminum construction is lightweight and durable
- Anti-slip powder coated handle for sure grip
- Soft grip end-cap for added comfort
- Handle measures: 60 in. x 1-1/4 in.



Model#	Size-in.	Size-mm	Type
G06939	19-1/2 x 4	495 x 102	w/o Hook

STEEL CONCRETE PLACER

- Grades, smooths, and spreads concrete at the proper working angle with ease
- Made of 12 gauge steel
- High strength welded construction
- 54-in. hardwood handle included



Model#	Size-in.	Size-mm	Type
G16119	19-7/8 x 4	505 x 100	w/Hook

WIRE TWISTER

- Used to twist wire bar ties with a minimum of effort
- Two or three twists and the tie is completed
- Heavy duty hook is electroplated for corrosion resistance
- Selected contoured hardwood handle



Model#	Desc.
G06969	Wire Twister

HEAVY DUTY KNEELER BOARD

- Provides knees with comfortable support and protection
- Tray is made from durable, lightweight polypropylene
- Soft pad is made from high density EVA for durability and long wearing
- Extra large, ergonomic soft grip handles
- Makes finishing concrete, laying carpet and tile, auto-repairs, garden projects and plumbing projects easier on your knees



Model#	Size-in.	Size-mm
G06966	18-7/8 x 13-5/8	480 x 345

MAGNESIUM BULL FLOAT

The Goldblatt Heavy-Duty Magnesium Bull Float is perfect for any concrete project. Made of lightweight extruded magnesium, these floats are extremely durable and long wearing. Crafted with special reinforcement ribs for added strength and to prevent warping. The all magnesium construction prevents concrete from clinging to the float resulting in a smoother slab and better finish. The face is properly curved and honed to prevent snagging. Blade only. No brackets included.



Model#	Size-in.	Size-mm
G06184	48 x 8	1219 x 203

36 IN ROUND END FRESNO TROWEL

- Round end fresno eliminates marking or gouging of slabs
- 360 degree all-angle bracket allows work at any angle
- Steel working edge



Model#	Size-in.	Size-mm
G06970	36 x 5	914 x 127

HUSTLER TILTING BULL FLOAT BRACKET

- Rugged lightweight aluminum handle and base
- Blade pitch controlled by turning the handle
- Large protected grease reservoir for easy control adjustment and smooth operation
- Fits all 2/4-hole bull float and multi-mount fresno without adapter



G06186

Model#	Size-in.	Size-mm
G06186	1-5/8	41

HUSTLER CHAIN BULL FLOAT BRACKET

- Rugged lightweight aluminum handle and reinforced nylon base
- Blade pitch controlled by turning the handle
- Large protected grease reservoir for easy control adjustment and smooth operation
- Fits all 2/4-hole bull float and multi-mount fresno without adapter



G16290

Model#	Size-in.	Size-mm
G16290	1-5/8	41

POSI-LOCK 4-HOLE BULL FLOAT BRACKET

- Sturdy cast aluminum construction
- Attach to 4-hole bull float to lock the handle at the best angle for use
- Screw kit included



G06053



G16677

Model#	Size-in.	Size-mm
G06053	1-5/8	41
G16677	1-3/4	44

1-3/8-IN CLEVIS TO BUTTON HANDLE ADAPTER

- Allows handle placement in any position within a 180° sweep
- Turn handle clockwise to lock in position; counter clockwise to unlock
- Fits tools having a post-type connector, such as edgers, groovers, fresnos and bull floats



Model#	Size-in.	Size-mm
G06182	1-3/8	35

ALUMINUM SWAGED BUTTON HANDLE

- Made of rugged, long lasting, lightweight aluminum alloy
- Quick connect snap spring positively locks handles in place



Model#	Size-in.	Size-mm
G16289	72 x 1-3/4	1829 x 44
G16334	72 x 1-3/8	1829 x 35

ALUMINUM THREAD EXTENSION HANDLE

- Made of rugged, long lasting, lightweight aluminum alloy
- Heavy duty steel machined thread plugs in each end
- Fits Goldblatt® bull float and fresno trowel threaded brackets and those from other manufacturers



Model#	Size-in.	Size-mm
G06957	72 x 1-3/4	1829 x 44

THREAD TO SNAP-IN ADAPTOR

- High grade aluminum construction
- Thread to snap-in handle



Model#	Size-in.	Size-mm	Desc.
G16282	1-3/4	275 x 44	Male
G16346	1-3/8	265 x 35	Male

* CAUTION: ALUMINUM HANDLES SHOULD NOT BE USED NEAR ELECTRICAL WIRING.

PROFESSIONAL BRICK TROWELS

• One-Piece • Flexible • Well-Balanced • Long-Lasting



Goldblatt Premium One-Piece Drop Forged Brick Trowels are the most popular trowel for applying mortar between layers of bricks, stones and concrete blocks. Forged from a single piece of high grade tool steel, these trowels can last for forever. Trowel blades are precisely taper ground for perfect balance and flexibility. The ergonomic pro soft grip handle ensures a firm comfortable and durable grip.



ONE-PIECE DROP FORGED CONSTRUCTION

TAPER GROUND BLADE IS HARDENED AND TEMPERED



OVER MOLDED SOFT GRIP HANDLE

PREMIUM ONE-PIECE DROP FORGED BLADE FOR HIGHEST STRENGTH AND DURABILITY

PRO LONDON BRICK TROWEL

- Premium one-piece drop forged blade for highest strength and durability
- Trowel is precisely taper ground for perfect balance and flexibility
- London pattern is the most popular for applying mortar between layers of brick, stone and concrete blocks

Model#	Size-in.	Size-mm	Handle
G01689	12 x 5-1/8	305 x 130	
G06972	11-1/2 x 5	292 x 127	
G01691	11 x 4-7/8	279 x 124	
G01690	10 x 4-5/8	254 x 117	



PRO PHILADELPHIA BRICK TROWEL

- Premium one-piece drop forged blade for highest strength and durability
- The Goldblatt® Philadelphia Brick Trowels are better suited for laying block because they allow for more mortar to be placed on the blade

Model#	Size-in.	Size-mm	Handle
G06973	11-1/2 x 5-3/4	292 x 146	



PRO POINTING TROWEL

- Premium one-piece drop forged blade for highest strength and durability
- Pointing Trowels are designed for scraping, digging, or repairing work

Model#	Size-in.	Size-mm	Handle
G06976	7 x 3	178 x 76	
G06977	5 x 2-1/2	127 x 64	



PRO MARGIN TROWEL

- Premium one-piece drop forged blade for highest strength and durability
- For patch jobs, hard-to-reach areas and spreading thinset

Model#	Size-in.	Size-mm	Handle
G06981	6 x 2	152 x 51	
G06982	5 x 2	127 x 51	



PRO TUCK POINTING TROWEL

- Premium one-piece drop forged blade for highest strength and durability
- Designed to make tight mortar jobs easier

Model#	Size-in.	Size-mm	Handle
G01685	5/8 x 6-3/4	16 x 172	
G06985	1/2 x 6-3/4	13 x 172	
G06986	3/8 x 6-3/4	10 x 172	
G01679	1/4 x 6-3/4	6 x 172	
G01678	3/16 x 6-3/4	5 x 172	



WELDED BRICK TROWEL

- High strength two-piece welded blade
- High carbon steel blade is heat treated and tempered
- Blade is carefully and precisely taper ground for flexibility and balance

NARROW LONDON



- London pattern is the most popular for applying mortar between layers of bricks, stones and concrete blocks

Model#	Size-in.	Size-mm	Handle
G01622	12 x 5-1/8	305 x 130	
G06016	11-1/2 x 5	292 x 127	
G01620	11 x 4-7/8	279 x 124	
G01618	10 x 4-5/8	254 x 116	



PHILADELPHIA



- Philadelphia pattern allows more mortar to be placed on the blade

Model#	Size-in.	Size-mm	Handle
G06114	11-1/2 x 5-3/4	292 x 146	
G01651	11 x 5-1/2	279 x 140	
G06021	11 x 5-1/2	279 x 140	



POINTING TROWEL



- Great for patching cracks and for shaping joints in bricks, stones and concrete blocks
- Ground and tempered steel blade
- High strength welded blade

Model#	Size-in.	Size-mm	Handle
G09348	7 x 3	178 x 76	
G09323	7 x 3	178 x 76	
G02728	5-1/2 x 2-7/8	140 x 73	
G06023	5-1/2 x 2-7/8	140 x 73	

MARGIN TROWEL



- For patch jobs, hard-to-reach areas and spreading thinset
- Ground and tempered steel blade
- High strength welded blade

Model#	Size-in.	Size-mm	Handle
G09336	6 x 2	152 x 51	
G02727	5 x 2	127 x 51	
G06983	5 x 2	127 x 51	

GAUGING TROWEL

- Many uses, including mixing or "gauging" small quantities of mortar or quick setting plaster
- High grade steel blade is heat treated and tempered
- High strength welded handle



Model#	Size-in.	Size-mm
G09349	7 x 3-3/8	178 x 86

BUTTERING TROWEL

- Designed for finishing concrete or mortar



Model#	Size-in.	Size-mm
G09341	7 x 4-3/8	178 x 111

CROSS JOINT TROWEL

- Designed for the professional cement finisher, brick mason, asphalt paver, tile setter, plasterer or drywall craftsman



Model#	Size-in.	Size-mm
G09354	4-3/4 x 1-3/4	121 x 44

BUCKET TROWEL

- Used to pick up mortar and spread it in preparation for the next course/layer of brick, block, or stone



Model#	Size-in.	Size-mm
G01126	7-1/2	191

Pacesetter Brick Trowels are designed for applying mortar between layers of bricks, stones and concrete blocks. Each comes with a comfortable plastic handle, and high grade tool steel blade that is heat treated and tempered for long-term use.

ECONOMY BRICK TROWEL London

- Heat-treated and tempered tool steel blade
- Used in many concrete and masonry applications
- High impact plastic handle



Model#	Size-in.	Size-mm
G06975	10 x 4-3/4	254 x 121



Model#	Size-in.	Size-mm
G01910	10 x 5	254 x 127

Gauging Trowel



Model#	Size-in.	Size-mm
G09356	7 x 3-3/8	178 x 86
G01932	7 x 3	178 x 76

Pointing Trowel



Model#	Size-in.	Size-mm
G01930	5 x 2-1/2	127 x 64

Margin Trowel



Model#	Size-in.	Size-mm
G06984	5 x 2	127 x 51

PaceSetter

ALUMINUM HAWK

- Made of tempered heavy gauge hard-rolled aluminum
- Smoothed edges and rounded corners
- Grain finish and circular grooves prevent materials from sliding
- Sponge rubber callus preventer included



Model#	Size-in.	Size-mm	Handle
G05031	13 x 13	330 x 330	

BRICK HAMMER

- Drop forged from high grade tool steel
- Larger hammer face and wider blade for any tough job
- Exceptional well balanced design
- Extra large contoured selected hardwood handle



Model#	OZ	Gram
G06993	20	308

CONVEX BRICK JOINTER

- For half round rodded or sunken joints
- Each end makes a different size joint
- Hard tempered for extra wear
- Smooth finished and well balanced, easy to handle



Model#	Size-in.	Size-mm
G01165	7/8 x 3/4	22 x 19
G01162	3/4 x 5/8	19 x 16
G06988	5/8 x 1/2	16 x 12
G06987	1/2 x 3/8	12 x 10

CONCRETE BROOM

- Ideal for applying non-slip finish or floor sweeping
- Heavy duty hardwood block
- 3 in. bristles are set securely in hard wood block
- Standard broom threaded hole included



Model#	Size-in.	Size-mm
G06955	24	610

SKATE WHEEL JOINT RAKER

- Specially hardened large diameter skate wheels
- Easy grip handle is formed at the end to rod joints
- Hardened nail is adjustable for depth
- Overall width 3 in.



G01210

GROUT BAG

- Used for holding and dispensing grout or mortar
- High strength fabric-backed vinyl bag
- Removable 3/8 in. metal tip for strength



Model#	Size-in.	Size-mm
G06992	23-1/2 x 14	598 x 355

MASONRY BRUSH

- Versatile brush uses for many purposes
- Hardwood block and handle
- Can be used on masonry, brick, tile and stone



G06989

BRICK TONGS

- Adjust to carry 6 to 11 bricks
- Heavy duty and built for longer service
- Made of light rugged metal alloy
- Will not damage bricks
- Easy to use, save time and labor



G11280

RUB BRICKS

- Ideal for dressing down concrete & newly cut tile and removing marks
- Fluted silicon carbide stone
- 20 grit rub bricks
- Comfortable contoured handles to minimize fatigue

Model#	Size-in.	Size-mm	Grit & Type
G06956	6 x 3 x 1	152 x 76 x 25	20 Fluted
G06168	8 x 3-1/2 x 1-1/2	203 x 89 x 38	20 Fluted



G06956



G06168

MASONRY ACID BRUSH



- Use for tough clean work
- Long wearing plastic bristle
- 2 in. long bristle
- Foam plastic block and handle
- Perfect for all types of block and brick use

Model#	Size-in.	Size-mm
G06990	8	203
G01421	20	508

NYLON MASON LINE

- #18 nylon line
- Built-in elasticity maintains tension, eliminates sagging
- Abrasion and alkali resistant
- Solid bright colors for high visibility
- Braided line tested up to 120lbs
- Twisted line up to 90lbs

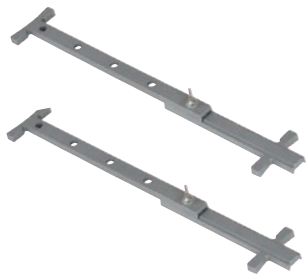
Model#	Color	Type
250ft.(76m)		
G11239	Fluorescent Orange	Braided
G11255	Fluorescent Pink	Braided
500ft.(152m)		
G11234	Fluorescent Orange	Braided
G11233	Fluorescent Yellow	Braided
G11231	Fluorescent Pink	Braided
1000ft.(305m)		
G11218	Fluorescent White	Twisted



* Caution: Safe work load - 20% of breaking strength. Replace worn or cut lines.

ADJUSTABLE ALUMINUM LINE STRETCHERS

- Works on blocks from 4 in. to 12 in.
- Loosen wing nut and move bolt to change size
- Packaged in pairs
- Made of quality cast aluminum



Model#	Size-in.	Size-mm
G01248	4-12	102-305

WOOD LINE BLOCK PAIR

- Used with mason's line for stacking brick and block
- Made from selected hardwood
- Sold in pairs



Model#	Size-in.	Size-mm
G06991	5-1/2 x 1 x 1	140 x 25 x 25



Welcome to Goldblatt Tools

DRYWALL TOOLS

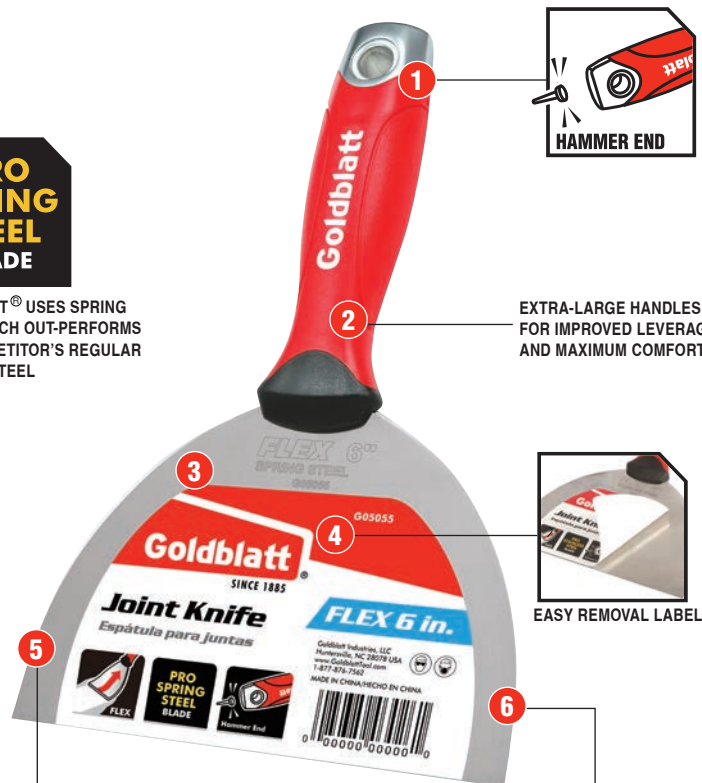
DELIVERING A HIGHER LEVEL OF PROFESSIONAL PERFORMANCE

WHAT'S THE BEST PUTTY/JOINT KNIFE ?

Goldblatt Pro series joint knives are among the best drywall joint knives on the market. Developed using a panel of professional finishers, these knives offer the flexibility and feel that will satisfy even the most demanding users. Uniquely balanced with proper flexible blades to ensure perfect feathering and finishing. Crafted with a unique tapered ergo-grip and rugged hammer-end (optional). Available in 1-1/2-inch, 2-inch, 3-inch, 4-inch, 5-inch and 6-inch sizes.

**PRO
SPRING
STEEL
BLADE**

GOLDBLATT® USES SPRING STEEL WHICH OUT-PERFORMS THE COMPETITOR'S REGULAR CARBON STEEL



EXTRA-LARGE HANDLES FOR IMPROVED LEVERAGE AND MAXIMUM COMFORT



EASY REMOVAL LABEL

BLADE IS HOLLOW GROUND FOR PROPER FLEXIBILITY. THE THICKER EDGE MAKES THE BLADE MORE DURABLE AND NICK RESISTANT

GOLDBLATT SPRING STEEL BLADES OFFER BETTER RUST RESISTANCE THAN COMPETITOR'S REGULAR CARBON STEEL BLADES

SOFT GRIP FLEX PUTTY AND JOINT KNIVES

- Premium hollow-ground spring steel blade for proper flexibility
- Ideal for applying compounds, smoothing and taping drywall seams
- Comfortable over-mold soft grip handle reduces fatigue

Model#	Size-in.	Size-mm	Handle
Spring Steel			
G05272	6	152	
G05270	4	102	
G05268	3	76	
G05266	2	51	
G05264	1-1/2	38	
Stainless Steel			
G05011	6	152	
G05012	4	102	



NYLON GRIP FLEX PUTTY AND JOINT KNIVES

- Tempered and polished taper-ground steel blade
- Full tang blade goes through the rugged solvent-resistant nylon handle
- Heavy duty zinc-alloy hammer end for setting popped nails and screws

Model#	Size-in.	Size-mm	Handle
Spring Steel			
G05013	6	152	
G05014	4	102	
G24123	3	76	
G24122	2	51	
G24121	1-1/2	38	
G05061	6	152	
G05059	4	102	
G05058	3	76	
G05057	2	51	
G05056	1-1/2	38	



Model#	Size-in.	Size-mm	Handle
Stainless Steel			
G24226	6	152	
G24224	4	102	

SOFT HANDLE STIFF PAINT SCRAPER

- Premium tempered spring steel stiff blade for scraping paint and removing putty
- Comfortable over-mold soft grip handle reduces fatigue
- Heavy duty zinc-alloy hammer end for setting popped nails and screws



Model#	Size-in.	Size-mm	Handle
G05067	3	76	
G05066	2	51	
G05065	1-1/4	32	

SOFT GRIP PAINTERS TOOL

- Premium stainless steel blade for multi-purpose use
- Comfortable over-mold soft grip handle reduces fatigue
- Heavy duty zinc alloyed hammer end for setting nails



Model#	Desc.	Handle
G05015	9-in-1 multi tool	

NYLON HANDLE STIFF PAINT SCRAPER

- Tempered and polished spring steel blade
- Full tang blade goes through the rugged solvent-resistant nylon handle
- Heavy duty zinc alloyed hammer end for setting nails



Model#	Size-in.	Size-mm	Handle
G24107	3	76	
G23105	2	51	
G05062	1-1/4	32	

NYLON HANDLE PAINTERS TOOL

- Premium stainless steel blade for multi-purpose use
- Full tang blade goes through the rugged solvent-resistant nylon handle
- Heavy duty zinc alloyed hammer end for setting nails



Model#	Desc.	Handle
G05834	6-in-1 multi tool	

BENT SCRAPER

- Hardened and tempered stainless steel blade for strength and durability
- Ergonomically extra large handle with a soft grip for more comfortable use
- Can connect with standard broom handle
- Heavy duty metal striking end



Model#	Size-in.	Size-mm	Handle
G02729	3	76	

PLASTIC PUTTY KNIFE AND JOINT KNIFE

- Made from high-impact plastic
- Tapered flexible blade with a comfortable grip that resists bending and breaking



Model#	Size-in.	Size-mm
G09112	10	254
G09111	8	203
G09110	6	152
G09107	4	102
G09106	3	76
G09105	2	51
G05805	3PK Plastic Joint Knife Set (2/4/6-in) / (51/102/152mm)	
G05016	3PK Plastic Taping Knife Set (6/8/10-in) / (152/203/254mm)	

PaceSetter

TAPING KNIVES FOR PROFESSIONAL TRADESMEN

The Goldblatt Pro series drywall taping knives are designed for the professional tradesman. Made of hardened and tempered steel for durability and offer excellent control for feathering and knockdown texturing. Tapered blade for running corners faster. Heavy duty aluminum backing plate provides rigidity. The ergonomic pro soft grip handle ensure a firm comfortable grip. Available in a variety of lengths.



BLUE STEEL

- Premium tempered blue steel blade



Model#	Size-in.	Size-mm	Handle
G05003	14	356	
G05004	12	305	
G05005	10	254	
G05006	8	203	
G05007	6	152	

STAINLESS STEEL

- Heavy duty zinc-alloy hammer end



Model#	Size-in.	Size-mm	Handle
G05644	14	356	
G05642	12	305	
G05640	10	254	
G05638	8	203	
G05636	6	152	
G05029	14	356	
G05000	12	305	
G05001	10	254	
G05002	8	203	
G05030	6	152	

PLASTIC HANDLE TAPING KNIFE



- Tempered flexible blue steel blade
- Lightweight aluminum backer plate
- Contoured high impact plastic handle
- Well balanced and easy to use

Model#	Size-in.	Size-mm
G05008	12	305
G05009	10	254
G05010	8	203
G05104	6	152

PaceSetter

STAINLESS STEEL HELI-ARC WELDED MUD PAN

- Made from heavy gauge stainless steel
- Corners are heli-arc welded to form smooth, seamless inside corners that reduce drywall mud build up
- All sides are sheared to clean knives easily



Model#	Size-in.	Size-mm
G05225	14	356
G05224	12	305
Non-Slip		
G05226	12	305

PLASTIC MUD PAN

- Made of durable plastic
- Features a metal scraping bar for wiping blades clean
- Resists chemicals and temperature changes
- Used for carrying drywall joint compound



Model#	Size-in.	Size-mm
G05017	14	356
G05206	12	305

PaceSetter

SPOT WELDED MUD PAN

- Made from heavy gauge steel
- Tapered ends and sides with mud-tight seams
- All sides are sheared to clean knives easily



Model#	Size-in.	Size-mm
Stainless Steel		
G05018	14	356
G05019	12	305
Galvanized Steel		
G05102	12	305

MUD PAN SOFT GRIP

- Provides soft anti-slip grip when using a steel mud pan
- Strong magnet securely fits any size of steel mud pan
- Withstands temperature variations



Model#	Size-in.	Size-mm
G05020	7 x 7-1/2	180 x 190

RADIAL DRYWALL SANDER

- Fast, free spinning head
- No flipping and ripping that causes expensive rework
- Works with all 9 in. hook & loop sandpapers
- Includes adapter to fit any standard extension pole
- Pole not included



HOOK & LOOP

Model#	Desc.	Size-in.	Size-mm
G25638	Radial Drywall Sander	9	229

RADIAL SANDING DISKS

- Hook & loop design for fast changes
- Aluminum oxide grit is long lasting and wear-resistant
- Works with most 9 in. radial sanders



Model#	Grit	QTY
G25660	80	10
G25661	100	10
G25662	120	10
G25663	150	10
G25664	180	10
G25665	220	10

Model#	Grit	QTY
G25640	80	15
G25641	100	15
G25642	120	15
G25643	150	15
G25644	180	15
G25645	220	15

UNIVERSAL POLE SANDER ADAPTOR

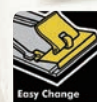
- Universal pole sander adaptor for drywall sanders
- Fit any standard extension pole



G25639

PRO POLE HAND SANDER

- Anti-flip universal joint with low center of gravity
- Reinforced die-cast aluminum base plate prevents "bowing"
- Quick-release clamp design for fast sandpaper changes
- 48 in. long durable aluminum handle with steel cap for setting nails
- Soft grip sleeve for extra comfort



Model#	Desc.	Size-in.	Size-mm
G05022	Sander with Aluminum Handle	9-1/4 x 3-1/4	235 x 83
G05036	Aluminum Handle	48	1219

POLE SANDER WITH WOOD HANDLE

- Anti-flip design has a universal joint with a low center of gravity offering ease of use
- Reinforced die-cast aluminum base plate prevents "bowing"
- Quick-release clamp design for fast sandpaper change
- The 48 in. long wood handle is high strength, durable and light weight



Model#	Desc.	Size-in.	Size-mm
G05063	Sander with Wood Handle	9-1/4 x 3-1/4	235 x 83
G15354	Drywall Pole Sander Head	9-1/4 x 3-1/4	235 x 83



DUST FREE HAND SANDER

- Reduce up to 90% of dust and mess for cleaner drywall sanding
- Compatible with most standard shop type vacuums
- Adjustable air-flow for variable vacuum force
- 360° pivoting elbow for ease of use on vertical surfaces
- Works with standard 11-1/4 in. die-cut sand screen sheets



Model#	Size-in.	Size-mm
G05028	9-1/4 x 3-1/4	235x83

PRO HAND SANDER

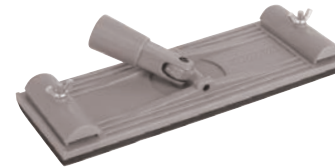
- Reinforced tempered aluminum plated for durability
- Comfortable durable soft grip handle reduces fatigue
- Screw clamp design holds abrasive sheets firmly
- For use with 11-1/4 in. die-cut or a half sheet of standard sandpaper



Model#	Size-in.	Size-mm
G05023	9-3/8 x 3-1/8	235 x 79

PLASTIC POLE SANDER HEAD

- Durable high impact plastic construction
- Standard threaded adapter can be used with standard extension handle
- Wing nut clamp design for quick sheet changes
- For use with 11-1/4 in. die-cut or a half sheet of standard sandpaper



Model#	Size-in.	Size-mm
G15355	9-1/4 x 3-1/4	235 x 83

PaceSetter

PLASTIC HAND SANDER

- Durable high impact plastic construction
- Wing nut clamp design for quick sheet changes
- For use with 11-1/4 in. die-cut or a half sheet of standard sandpaper



Model#	Size-in.	Size-mm
G05445	9-3/16 x 3-1/4	233 x 83

PaceSetter

DRYWALL RASP

- Long-lasting premium anti-rust stainless steel blade
- Works in both directions to remove more material per stroke than regular rasps
- Comfort grip handle reduces fatigue
- Resists clogging
- Handy tool to carry in the pocket or pouch



Model#	Desc.
G05026	Drywall Rasp

3-IN-1 DRYWALL TOOL (LIFTER/ RASP/ CARRIER)

- A lightweight and compact tool
- 3-in-1 function: Lifter, rasp and carrier
- Non-clogging rasp with protective guides
- Lifts standard size of drywall sheets
- Carries small sizes of drywall or plywood sheets



Model#	Desc.
G05024	3-in-1 Drywall Tool

CURVED BLADE DRYWALL TROWEL

- Pre-shaped concave blade helps the user feather the mud and make ideal drywall joints
- Spring steel blade is heat-treated and tempered
- High strength welded blade and aluminum alloy mounting for durability
- Anti-turn ergonomic soft-grip handle



Model#	Size-in.	Size-mm
G05511	11 x 4-1/2	279 x 114

OUTSIDE CORNER TOOL

- Premium tempered flexible stainless steel blades are corrosion-proof and long lasting
- Blade flexes to form ideal 90 degree angle outside corners
- Soft-grip handle provides added comfort
- Used to embed tape and smooth out the final layer of mud at each corner



Model#	Blade-size	Size-mm
G05529	3-1/2 x 2-3/8	89 x 60

INSIDE CORNER TOOL

- Premium tempered flexible stainless steel blades are corrosion-proof and long lasting
- Blade flexes to form ideal 90 degree angle inside corners
- Soft-grip handle provides added comfort
- Used to embed tape and smooth out the final layer of mud at each corner



Model#	Blade-size	Size-mm
G05522	5 x 4	127 x 102
G05521	3-1/4 x 2-3/4	83 x 70

DRY TAPE BANJO®

- The original drywall tape Banjo®
- One-handed mud and tape loading
- Made of rugged, lightweight aluminum
- Holds up to 500 linear feet of drywall tape
- Adjustable side strap and thumb rest included
- Tape stays dry and is visible through the back



Model#	Maximum Tape Length
G15301	500ft.(152m)

WET TAPE BANJO®

- The original drywall tape Banjo®
- One-handed mud and tape loading
- Made of rugged, lightweight aluminum
- Holds up to 500 linear feet of drywall tape
- Adjustable side strap and thumb rest included
- Tape and mud occupy the same one cavity



Model#	Maximum Tape Length
G15302	500ft.(152m)

DRYWALL SCREW ADAPTOR

- Convert any drill to a screw gun
- Counter sinks screws to the proper depth
- Will not tear, puncture or damage drywall
- Magnetic head helps hold screw in place



Model#	Desc.
G15840	Drywall Screw Adaptor

CIRCLE CUTTER

- Hardened cutter wheel and center pin will remain sharp longer
- Cuts precise circles up to 16 in. diameter in drywall
- Measures accurately on the calibrated steel shaft
- Features English and Metric measurements in 1/4 in. and millimeters



Model#	Desc.
G05141	Circle Cutter

DRYWALL TAPE HOLDER

- Made of steel and plated to prevent rust
- Holds all standard tape rolls up to 500ft. (152M)
- Pull wire for easy refilling
- Handy belt clip for easy access



Model#	Desc.
G05221	Drywall Tape Holder

CLINCHER WITH MALLET

- Heavy-duty die-cast aluminum construction
- Comes with a 24 oz mallet
- Use to quickly crimp and center outside corner bead, creating a precise clean corner



Model#	Size
G15813	Corner Bead 1-1/4"

48-IN T SQUARE

- Heat-treated aluminum construction is long lasting and lightweight
- Cross head is angled for added strength and durability
- High-visibility markings
- 2-Inch blades allows to cut both sides of an outlet opening without moving the square



Model#	Size-in.	Size-mm
G05121	48 x 22	1219 x 559

KNOCKDOWN KNIFE

- 24 in. wide tempered blue steel blade for strength
- Lightweight anodized aluminum handle with comfortable grip
- Gives walls and ceiling textures a flattened appearance



Model#	Size-in.	Size-mm
G05500	24	610

DRYWALL ROLL LIFTER

- All-steel construction for durability
- Lifts board at least 2 in. from floor
- Easy for one person to handle drywall raising and nailing
- Works great in tight spaces



Model#	Desc.
G15149	Drywall Roll Lifter

HEAVY DUTY DRYWALL JAB SAW

- Triple ground tooth design cuts 50% faster than conventional saws
- Hardened blade easily cuts both directions
- 6 in. jab saw with a sharpened tip for puncturing
- Ergonomic soft grip handle resists slipping and adds comfort
- Use on drywall, wood, plastic and cement board



Model#	Size-in.	Size-mm
G20556	6	152

DRYWALL JAB SAW

- Temper hardened blade easily cuts both directions
- 6 in. jab saw with a sharpened tip for puncturing
- Wood handle resists slipping and adds comfort
- Use on drywall, wood, plastic and cement board



Model#	Size-in.	Size-mm
G05143	6	152

CROWS FOOT TEXTURE BRUSH

- Hardwood handle with durable Tampico fiber bristles
- Flattened bristles are ideal for creating crows feet and similar textures on walls and ceilings
- Threaded, accepts standard 3/4 in. (19mm) broom handle and extension poles
- Can be hand held or pole mounted



Model#	Type
G05260	Single Crows Foot Texture Brush
G05261	Double Crows Foot Texture Brush

TEXTURE BRUSH

- Bristles of gray flared horsehair and polypropylene
- Threaded, accepts standard 3/4 in. (19mm) broom handle and extension poles
- Block with molded hand grip
- Use to create textured patterns



Model#	Desc.
G05116	Texture Brush

ONE-PIECE DRYWALL HAMMER

- Solid forged steel shaft with fully polished milled face
- Hatchet end has a notch for pulling nails
- Ergonomic anti-vibration handle minimizes vibration and shock upon impact
- Ideal for installing drywall or gypsum board



Model#	Size
G05027	14oz

MUD MASHER

- Ideal for mixing small, lump-free batches of joint compound, mortar or grout
- Made of heavy gauge, rust-resistant plated wire
- 5 in. square head



Model#	Desc.
G05103	Mud Masher

DRYWALL REPAIR KIT

Set include:

- 1pc 8 in. blue steel taping knife
- 1pc Inside corner tool
- 3pc plastic putty knives: 2 in. 4 in. 6 in.
- 1pc inside corner tool
- 1pc sanding sponge
- 1pc 10 in. mud pan



Model#	Desc.
G05975	Drywall Repair Kit

PaceSetter

DRYWALL PANEL CARRIER

- Durable high impact plastic construction
- Enables one person to easily carry sheet materials
- Carry plywood and drywall sheets easily
- Handle is offset to keep sheet materials away from hands

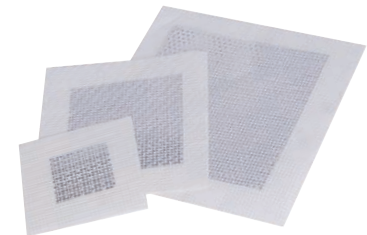


Model#	Desc.
G05025	Drywall Panel Carrier

PaceSetter

REPAIR PATCH

- Easily repair walls and ceilings
- Self adhesive fiberglass mesh holds patch firmly into place
- Rustproof aluminum base
- Easy to install



Model#	Desc.
G15215	2 pack 4" x 4"
G15220	4 pack 6" x 6", 4" x 4", 2-2" x 2"
G15225	2 pack 8" x 8"

HEAVY DUTY CAULK GUN

- Heavy gauge steel half-barrel frame and zinc alloy handle for durability
- 12:1 high thrust ratio for easy use on most latex, acrylic and silicone caulks
- Features operator-controlled thrust rate and quick pressure release
- Built-in ladder hook for job-site convenience



Model#	Size-in.	Size-mm
G02166	13	330
G02167	9	228

DRIPLESS CAULK GUN

- Dripless design reduces waste
- Hex rod design helps provide a smoother application
- Puncture tool to unclog tubes and remove dirt or debris
- Convenient built-in spout cutter



PaceSetter

Model#	Size-in.	Size-mm
G02168	9	228

CAULK GUN

- Smooth steel rod design helps provide a smoother application
- Features operator-controlled thrust rate and quick pressure release
- For light to medium applications



PaceSetter

Model#	Size-in.	Size-mm
G02169	9	228

CAULK FINISHER

- For smoothing most household sealants, silicone, fillers, grout and putty
- Features ergonomic plastic handle for user comfort - easy to use and clean
- Ensures a smooth, even fill and neat finish
- Saves time and messy fingers



PaceSetter

Model#	Desc.
G02039	Caulk Finisher

GLASS CUTTER

- Made of zinc die cast metal
- Use for general cutting of glass



Model#	Desc.
G05823	Glass Cutter

3-1/2-IN GLASS SCRAPER

- Overmold handle provides a secure comfortable grip
- Stores up to 5 blades in the handle
- 5 blades included



Model#	Desc.
G03072	3-1/2 in. Glass Scraper
G03127	5 PK 3-1/2 in. Blades

2PC GLASS SCRAPER SET WITH 10 BLADES

- Set includes: 3-1/2 in. glass scraper and razor scraper
- Both include five replacement blades



Model#	Desc.
G03073	2PC Glass Scraper Set with 10 blades

STAINLESS STEEL RAZOR SCRAPER WITH 5 BLADES

- Safety glass scraper comes with five single edge razor blades
- Blade track design minimizes clogging for positive blade extension and safe retraction
- Great for taking stickers off mirrors, glass and more



Model#	Desc.
G03070	Stainless Steel Razor Scraper with 5 Blades
G03123	10 Razor Blades

WIRE BRUSH

- Rugged natural hardwood handle
- Tempered carbon steel bristles
- Galvanized steel scraper



PaceSetter

Model#	Desc.
G02151	Wire Brush

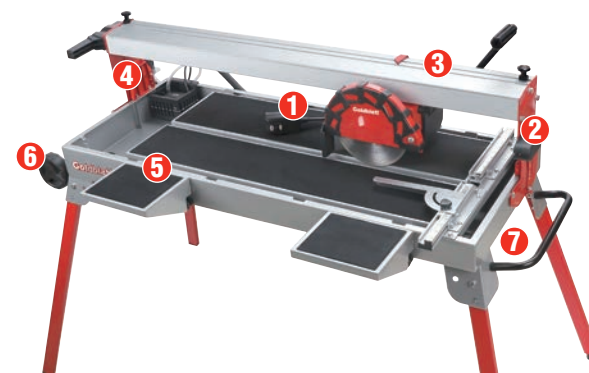
Goldblatt[®]
SINCE 1885



Welcome to Goldblatt Tools

TILE TOOLS
PROFESSIONAL PERFORMANCE
GUARANTEED

36-IN BRIDGE TILE WET SAW



- Cuts ceramic tile, porcelain tile, marble, slate and stone
- 1 year warranty



GFCI ON CORD SET



LASER



ADJUSTABLE
PIVOTING RAIL



INNOVATIVE WATER
TRANSPORT SYSTEM



EXTENSION TABLE

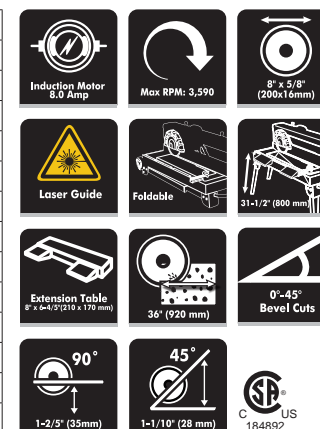


HEAVY DUTY FOLD-UP
STAND WITH 2 LARGE
WHEELS



CARRY HANDLE

Model#	G02774
Power	120 V - 60 Hz, 8.0 Amp
No-load speed	3590 RPM
Blade size	8" x 5/8" (200 x 16 mm)
Table size	35" x 15-3/4" (890 x 400 mm)
Extension table size	8" x 6-4/5" (210 x 170 mm)
Bevel cuts	0° - 45°
Max. cutting width	36" (920 mm)
Max. cutting depth	1-2/5" (35mm) at 90° 1-1/10" (28 mm) at 45°
Accessories	1pc 8 in. continuous rim diamond blade 2pcs Extension Table
Weight	109 lbs (49.6 kg)

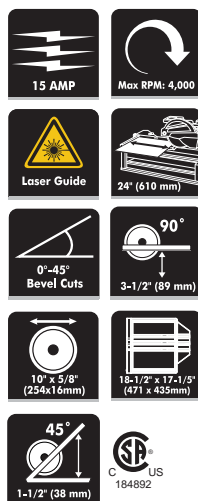


24-IN PROFESSIONAL TILE WET SAW



- Cuts ceramic tile, porcelain tile, marble, slate and stone
- 1 year warranty

Mode#	G02775
Power	120 V ~ 60 Hz, 15 Amp
No-load speed	4000 RPM
Blade size	10" x 5/8" (254 x 16 mm)
Table size	18-1/2" x 17-1/5" (471 x 435 mm)
Extension table size	8" x 6-4/5" (210 x 170 mm)
Bevel cuts	0°/22.5°/45°
Max. cutting length	24" (610 mm)
Max. cutting width	12-29/32" (328 mm)
	18" (457 mm)
	3-1/2" (89 mm) at 90°
Max. cutting depth	2-23/64" (59 mm) at 22.5°
	1-1/2" (38 mm) at 45°
Accessories	1pc 10 in. Continuous Rim Diamond Blade
	1pc Convenient Stand With Rear Locking Wheels
Weight	108 lbs (49 kg)



TILE WET SAW



- Cuts ceramic tile, porcelain tile, marble, slate and stone
- 1 year warranty



Mode#	G02772
Power	120 V ~ 60 Hz, 4.6 Amp
No-load speed	3590 RPM
Blade size	7" x 5/8" (180 x 16 mm)
Table size	13-9/16" x 16" (345 x 405 mm)
Max. Extension width	4-3/4" (120 mm)
Max. Extension range	6" (150 mm)
Bevel cuts	0°/22.5°/45°
Max. cutting depth	1-3/16" (30 mm) at 90°
	3/5" (14 mm) at 45°
	1pc 7 in. Continuous Rim Diamond Blade
Accessories	1pc Rip Fence
	1pc Angle Gauge
	1pc Extension Table
Weight	28 lbs (12.7 kg)

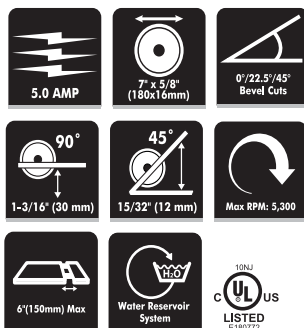


TILE WET SAW

- Cuts ceramic tile, porcelain tile, marble, slate and stone
- 1 year warranty



Mode#	G02773
Power	120 V ~ 60 Hz, 5.0 Amp
No-load speed	5300 RPM
Blade size	7" x 5/8" (180 x 16 mm)
Table size	13-9/16" x 13-9/16" (345 x 345 mm)
Max. Extension width	4-3/4" (120 mm)
Max. Extension range	6" (150 mm)
Bevel cuts	0°/15°/30°/45°
Max. cutting depth	1-3/16" (30 mm) at 90° 15/32" (12 mm) at 45°
Accessories	1pc 7 in. Continuous Rim Diamond Blade 1pc Rip Fence 1pc Angle Gauge 1pc Extension Table
Weight	19 lbs (8.6 kg)

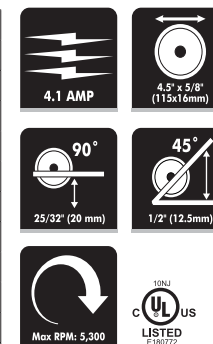


TILE WET SAW

- Cuts ceramic tile, porcelain tile, marble, slate and stone
- 1 year warranty



Mode#	G02770
Power	120 V ~ 60 Hz, 4.1 Amp
No-load speed	5300 RPM
Blade size	4-1/2" x 5/8" (115 x 16 mm)
Table size	13" x 14-11/64" (330 x 360 mm)
Bevel cuts	0°/45°
Max. cutting depth	25/32" (20 mm) at 90° 1/2" (12.5 mm) at 45°
Accessories	1pc 4-1/2" Continuous Rim Diamond Blade 1pc Rip Fence 1pc Angle Gauge
Weight	14.3 lbs (6.5 kg)

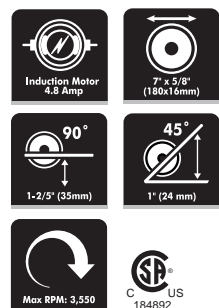


PORTABLE TILE SAW

- Cuts ceramic tile, porcelain tile, marble, slate and stone
- 6-month warranty



Mode#	G02771
Power	120 V ~ 60 Hz, 4.8 Amp
No-load speed	3550 RPM
Blade size	7" x 5/8" (180 x 16 mm)
Table size	15-1/4" x 15-5/8" (385 x 395 mm)
Bevel cuts	0° - 45°
Max. cutting depth	1-2/5" (35 mm) at 90° 1" (24 mm) at 45°
Accessories	1pc 7 in. Continuous Rim Diamond Blade 1pc Rip Fence 1pc Angle Gauge
Weight	28.7 lbs (13 kg)



PaceSetter

HANDHELD TILE SAW



- Ideal for cutting tile, stone, brick and marble
- 1 year warranty



GFCI ON CORD SET



LOCK-ON SWITCH



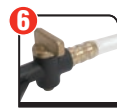
WATER TUBING



COMFORT RUBBER GRIP



DEPTH ADJUSTMENT KNOB



WATER VALVE LEVER



CUTTING GUIDE



BEVEL ADJUSTMENT KNOB



WATER NOZZLE



WATER PRESSURE REGULATOR

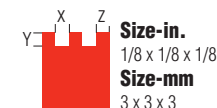
Model#	G09601
Power	120 V - 60 Hz, 10 Amp
No-load speed	14,500 RPM
Blade size	4" x 5/8" (105 x 16 mm)
Bevel cuts	0°- 45°
Max. cutting depth	1-5/32" (29 mm) at 90°
	3/4" (19 mm) at 45°



NOTCH LISTINGS *

All Trowels Measure: Width(X) x Depth(Y) x Space Apart(Z)

SQ NOTCHES



Size-in.
1/8 x 1/8 x 1/8
Size-mm
3 x 3 x 3



Size-in.
1/4 x 1/4 x 1/4
Size-mm
6 x 6 x 6



Size-in.
1/4 x 3/8 x 1/4
Size-mm
6 x 10 x 6



Size-in.
3/8 x 3/8 x 3/8
Size-mm
10 x 10 x 10



Size-in.
1/2 x 1/2 x 1/2
Size-mm
12 x 12 x 12

U NOTCHES



Size-in.
1/4 x 1/4 x 1/4
Size-mm
6 x 6 x 6



Size-in.
1/2 x 1/2 x 1/2
Size-mm
12 x 12 x 12

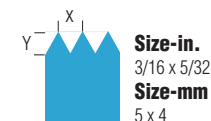


Size-in.
1/4 x 3/8 x 1/4
Size-mm
6 x 10 x 6



Size-in.
3/4 x 9/16 x 3/8
Size-mm
19 x 14 x 10

V NOTCHES



Size-in.
3/16 x 5/32
Size-mm
5 x 4

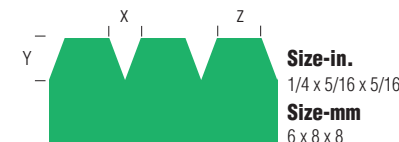


Size-in.
1/4 x 3/16
Size-mm
6 x 5



Size-in.
1/2 x 1/2
Size-mm
12 x 12

FLAT V NOTCHES



Size-in.
1/4 x 5/16 x 5/16
Size-mm
6 x 8 x 8



Size-in.
3/16 x 1/4 x 5/16
Size-mm
5 x 6 x 8

* Do not scale.

PROFESSIONAL NOTCH TROWELS

Designed for the professional tradesman

STAINLESS STEEL NOTCH TROWEL

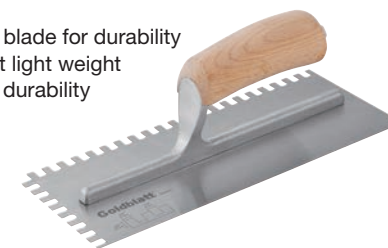
- Mirror polished non-rust stainless steel trowel blade
- Aluminum alloy mounting is very strong but light weight
- Anti-turn ergonomic soft grip handle reduces fatigue
- Blade measures 11 in. x 4-1/2 in.
- Available in a variety of notch styles



Model#	Notch Size-in.	Notch Size-mm	Handle	Notch
G02411	1/8 x 1/8 x 1/8	3 x 3 x 3		SQ
G02413	1/4 x 1/4 x 1/4	6 x 6 x 6		SQ
G02414	1/4 x 3/8 x 1/4	6 x 10 x 6		SQ
G02379	3/8 x 3/8 x 3/8	10 x 10 x 10		SQ
G02416	1/2 x 1/2 x 1/2	12 x 12 x 12		SQ
G02383	1/4 x 1/4 x 1/4	6 x 6 x 6		U
G02384	1/4 x 3/8 x 1/4	6 x 10 x 6		U
G02385	1/2 x 1/2 x 1/2	12 x 12 x 12		U
G02422	3/4 x 9/16 x 3/8	19 x 14 x 10		U
G02423	3/16 x 5/32	5 x 4		V
G02424	1/4 x 3/16	6 x 5		V
G02365	1/2 x 1/2	12 x 12		V

CARBON STEEL NOTCH TROWEL

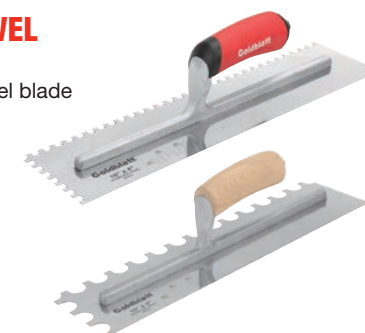
- Hardened and tempered high carbon steel blade for durability
- Aluminum alloy mounting is very strong but light weight
- Anti-turn camel back hardwood handle for durability
- Blade measures 11 in. x 4-1/2 in.
- Available in a variety of notch styles



Model#	Notch Size-in.	Notch Size-mm	Handle	Notch
G02461	1/8 x 1/8 x 1/8	3 x 3 x 3		SQ
G02462	1/4 x 1/8 x 1/4	6 x 3 x 6		SQ
G02463	1/4 x 1/4 x 1/4	6 x 6 x 6		SQ
G02464	1/4 x 3/8 x 1/4	6 x 10 x 6		SQ
G02376	3/8 x 3/8 x 3/8	10 x 10 x 10		SQ
G02466	1/2 x 1/2 x 1/2	12 x 12 x 12		SQ
G02380	1/4 x 1/4 x 1/4	6 x 6 x 6		U
G02381	1/4 x 3/8 x 1/4	6 x 10 x 6		U
G02382	1/2 x 1/2 x 1/2	12 x 12 x 12		U
G02474	1/4 x 3/16	6 x 5		V
G02475	1/4 x 1/4	6 x 6		V
G02473	3/16 x 5/32	5 x 4		V
G02360	1/2 x 1/2	12 x 12		V

XL STAINLESS STEEL NOTCH TROWEL

- Mirror polished non-rust stainless steel trowel blade
- Aluminum alloy mounting is very strong but light weight
- Hardened and tempered blade for durability
- Anti-turn ergonomic soft grip handle or hardwood handle reduces fatigue
- Blade measures 16 in. x 4 in.



Model#	Notch Size-in.	Notch Size-mm	Handle	Notch
G02046	1/4 x 1/4 x 1/4	6 x 6 x 6		SQ
G02049	1/4 x 3/8 x 1/4	6 x 10 x 6		SQ
G02047	1/2 x 1/2 x 1/2	12 x 12 x 12		SQ
G02137	1/2 x 1/2	12 x 12		V
G02050	3/4 x 9/16 x 3/8	19 x 14 x 10		U



ECONOMY NOTCH TROWEL

- The blade is made of tempered carbon steel
- Comfortable plastic handle
- Blade measures 9 in. x 4 in.
- Available in a variety of notch styles



Model#	Notch Size-in.	Notch Size-mm	Notch
G02657	3/16 x 3/16 x 3/16	4.5 x 4.5 x 4.5	SQ ■
	3/32 x 3/32 x 3/32	2 x 2 x 2	SQ ■
G02392	1/4 x 1/4 x 1/4	6 x 6 x 6	SQ ■
G02391	1/4 x 3/8 x 1/4	6 x 10 x 6	SQ ■
G02656	1/2 x 1/2 x 1/2	12 x 12 x 12	SQ ■
G02653	1/16 x 1/16 x 1/16	1.5 x 1.5 x 1.5	U ■
G02651	1/8 x 1/16 x 3/32	3 x 1.5 x 2	U ■
G02654	1/8 x 1/8 x 3/32	3 x 3 x 2	U ■
G02650	1/16 x 1/16 x 1/16	1.5 x 1.5 x 1.5	U ■
	1/16 x 1/32 x 1/32	1.5 x 1 x 1	U ■
G02659	3/16 x 1/8	4.5 x 3	V ▼
G02662	1/4 x 3/16	6 x 4.5	V ▼
G02663	3/16 x 5/32	4.5 x 4	V ▼
G02658	1/4 x 5/16 x 5/16	6 x 8 x 8	Flat V ▼
G02660	3/16 x 1/4 x 5/16	4.5 x 6 x 8	Flat V ▼

PaceSetter

NOTCHED MARGIN TROWEL

- High grade tool steel blade is heat treated and tempered
- For patch jobs, hard-to-reach areas and spreading thinset
- Blade measures: 6 in. x 2 in.



Model#	Notch Size-in.	Notch Size-mm	Handle	Notch
G02052	1/4 x 1/4 x 1/4	6 x 6 x 6	■	SQ ■
G02762	1/4 x 3/8 x 1/4	6 x 10 x 6	■	SQ ■
G02053	1/4 x 1/4 x 1/4	6 x 6 x 6	■	SQ ■

RECOMMENDED NOTCH USE GUIDE*

Notch Type	Notch Size-in.	Notch Size-mm	Uses
SQ ■	1/8 x 1/8 x 1/8	3 x 3 x 3	Small Ceramic Tile Floor, Carpet, Wall Tile
SQ ■	1/4 x 1/4 x 1/4	6 x 6 x 6	Medium Ceramic Tile Floor, Wall Tile
SQ ■	1/4 x 3/8 x 1/4	6 x 10 x 6	Large Ceramic Tile Floor, Pavers
SQ ■	3/8 x 3/8 x 3/8	10 x 10 x 10	Medium Ceramic Tile Floor, EIFS
SQ ■	1/2 x 1/2 x 1/2	12 x 12 x 12	Large Ceramic Tile Floor, Pavers, EIFS
U ■	1/4 x 1/4 x 1/4	6 x 6 x 6	Medium Ceramic Tile Floor
U ■	1/4 x 3/8 x 1/4	6 x 10 x 6	Medium Ceramic Tile Floor, Wall Tile
U ■	1/2 x 1/2 x 1/2	12 x 12 x 12	Large Ceramic Tile Floor, Marble Mortar
U ■	3/4 x 9/16 x 3/8	19 x 14 x 10	Large Ceramic Tile Floor, Marble Mortar
V ▼	3/16 x 5/32	4.5 x 4	Small Ceramic Tile Floor, Carpet, Wall Tile, Mosaic
V ▼	1/4 x 3/16	6 x 4.5	Small Ceramic Tile Floor, Metal Tile, Wall Tile
V ▼	1/2 x 1/2	12 x 12	Large Ceramic Tile Floor
Flat V ▼	1/4 x 5/16 x 5/16	6 x 8 x 8	Carpet, Wall Tile
Flat V ▼	3/16 x 1/4 x 5/16	4.5 x 6 x 8	Carpet, Wall Tile

* Always check adhesive/mortar manufacturer's trowel recommendation before selecting trowel notch.

PRO GUM RUBBER GROUT FLOAT

- Non-stick gum rubber to ensure smooth application of grout
- Heavy duty plastic backing plate for strength and durability
- Two rounded corners prevent gouging of grout joints
- Two squared corners provide even coverage into corners
- The large ergonomic soft grip handle offers comfort and durability



Model#	Size-in.	Size-mm
G02370	9-1/2 x 4	242 x 102
G02723	12 x 4	305 x 102

GUM RUBBER GROUT FLOAT

- Non-stick gum rubber to ensure smooth application of grout
- Sturdy aluminum backing plate for strength and durability
- Two rounded corners prevent gouging of grout joints
- Two squared corners provide even coverage into corners
- Large, comfortable ergonomic wood handle



Model#	Size-in.	Size-mm
G02721	9-1/2 x 4	242 x 102
G02758	12 x 4	305 x 102
G02035	12 x 3	305 x 76

MARGIN GROUT FLOAT

- Non-stick gum rubber to ensure smooth application of grout
- Great for grouting tile in hard-to-reach areas
- For small jobs like mosaics, countertops and backsplashes



Model#	Size-in.	Size-mm	Handle
G02368	6 x 2	152 x 51	

PRO EPOXY GROUT FLOAT

- High density green gum rubber
- Heavy duty plastic backing plate
- Two rounded corners and 2 squared corners
- The large ergonomic soft grip handle offers easy handling



Model#	Size-in.	Size-mm
G02371	9-1/2 x 4	242 x 102

EPOXY MARGIN FLOAT

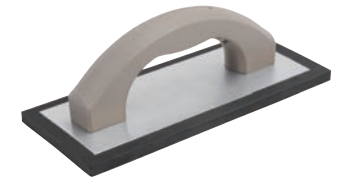
- Great for spreading epoxy in small or tight areas
- High density green gum rubber
- Comfortable soft grip handle with finger guard



Model#	Size-in.	Size-mm	Handle
G02761	6 x 2	152 x 51	

ECONOMY GROUT FLOAT

- For small tile installation jobs or repairs
- Aluminum backing plate
- EVA foam pad
- Contoured plastic handle



Model#	Size-in.	Size-mm
G02034	9-1/2 x 4	242 x 102

PaceSetter

PRO COMPOUND TILE NIPPERS

- Heavy duty construction with long lasting tungsten tips
- High leverage design for twice the power of conventional nippers
- Used to cut small tile pieces, remove points from corners and make irregular cuts on all types of tile and stone
- Ergonomic anti-slip handle for comfort grip



**2X
POWER**

Model#	Size-in.	Size-mm
G02009	9	229

PRO TILE NIPPERS

- Drop forged steel construction
- Long-lasting tungsten tips
- Makes irregular cuts on ceramic tile and marble tile
- Ergonomic anti-slip handle for comfort grip



Model#	Size-in.	Size-mm
G02008	8-1/2	216

PRO GLASS TILE NIPPERS

- The glass tile nippers quickly and easily cut shapes in glass tile up to 1/4 in. thick
- Use the Nipper-like scissors trim glass tile to fit around pipes, cabinets and walls or create eye-catching glass mosaics
- Drop forged steel construction



Model#	Size-in.	Size-mm
G02007	8-1/2	216

Replacement Blade

G02757	2PK Replacement Cutting Wheel
--------	-------------------------------



PRO HAND HELD TILE CUTTER/PLIERS

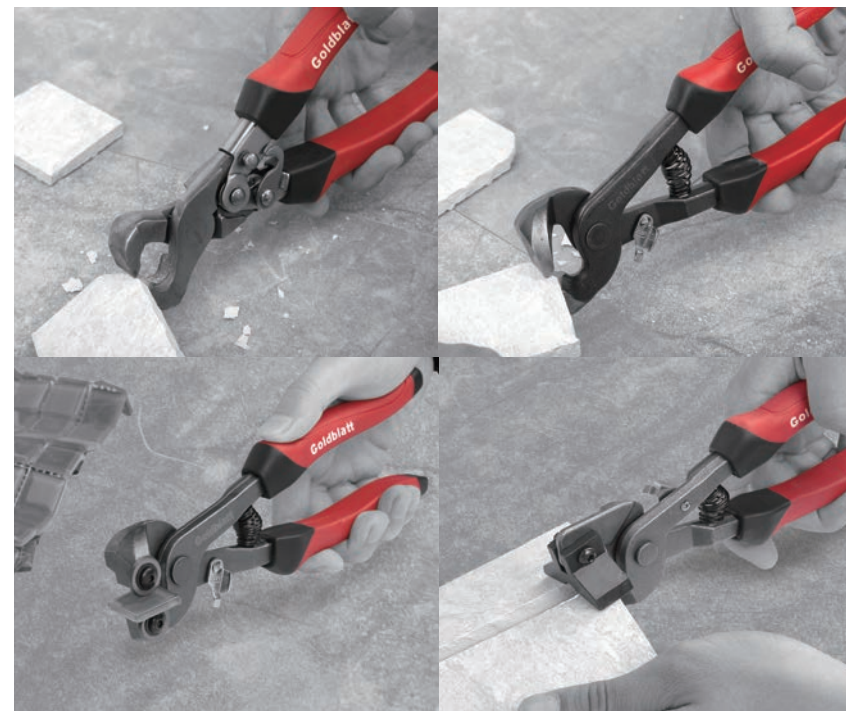
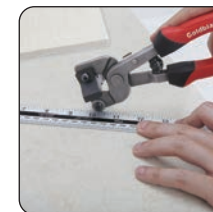
- Drop forged steel construction
- Replaceable 1/2 in. carbide ceramic tile scoring wheel
- Score tile with the wheel then break with breaker bar
- Ergonomic anti-slip handle for comfort grip



Model#	Size-in.	Size-mm
G02010	8-1/2	216

Replacement Blade

G02718	1PK Replacement Cutting Wheel
--------	-------------------------------



FOLDING BACKBOARD SCORING KNIFE

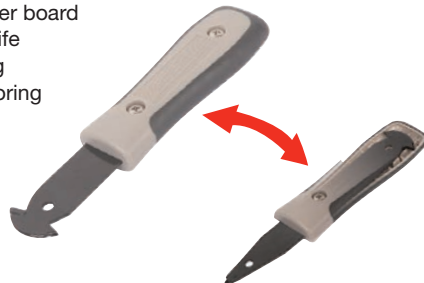
- Scores all types of cement based backerboard
- Durable tungsten carbide tips for longer life
- Folds for safe, easy storage and carrying
- Lightweight and durable anodized aluminum handle
- Measures 4-3/8 in. closed, 7-1/4 in. open



Model#	Handle
G02736	Aluminum

BACKBOARD SCORING KNIFE

- Scores all types of cement based backer board
- Three tungsten carbide tips for longer life
- Includes chisel tip in handle for shaping
- Contoured soft grip handle for easy scoring



PaCeSetter

Model#	Style
G02737	3 Tips Available

DOOR JAMB SAW

- Used to cut around door jambs and other obstacles to allow flooring to fit underneath
- Double sided toothed blade for long term use
- Premium triple-ground teeth for quick and fast cutting
- Offset handle protects knuckles



Model#	Size-in.	Size-mm
G02103	12	304

6-IN ROD SAW

- For cutting curves in ceramic tile, stone and marble
- Kit includes a 6 in. tungsten carbide blade and carbide tipped drill bit
- Diamond coated rod saw blade for longer life
- Cuts ceramic tile, metal, fiberglass and glass



Model#	Size-in.	Size-mm
G02001	6	152
Replacement Blade		
G02003	6-in Rod Saw Blade	

TILE FILE

- Used to sand and smooth out rough edges on tile and stone
- Tungsten carbide grit coated blade
- Flat and rounded sides for straight and contoured shapes
- Ergonomic anti-slip handle



Model#	Size-in.	Size-mm
G02122	11	279

GROUT REMOVAL TOOL

- Used to remove unwanted grout, mortar, thinset, caulking, surface rust and grime
- Durable carbide tip with six scraping edges
- 2 carbide blades included
- Ergonomic anti-slip handle for comfort grip



Model#	Size-in.	Size-mm
G02404	9-1/2	242

PRO TILE GROUT SAW

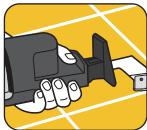
- Ideal for stripping, cleaning, and removal of old grout
- High leverage handle is contoured and offset
- Equipped with two carbide grit edge blades



G02738

RECIPROCATING GROUT SAW BLADE

- Attach to any reciprocating saw for quick grout removal
- Equipped with two carbide grit edged blades



G02154

G02739

Model#	Desc.
G02738	Pro Tile Grout Saw
Replacement Blade	
G02154	Reciprocating Grout Saw Blade
G02739	2PK Grout Saw Blades

GROUT SAW

- Strips, cleans and removes old grout
- Includes: one long-lasting carbide grit edge blade and one serrated blade
- Use 1 blade for narrow grout lines or use both blades for wide grout lines



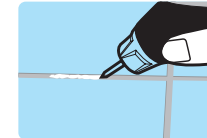
G02036

G02037

Model#	Desc.
G02036	Grout Saw
Replacement Blade	
G02037	2PK Grout Saw Blades

ELECTRIC GROUT REMOVER

- Creates little or no dust when removing old and discolored grout
- Variable stroke adjustment for precise control
- Soft touch for comfortable use
- Removes grout up to 1/8 in. wide without damaging tile
- Two carbide tips (pointed and chisel) are included

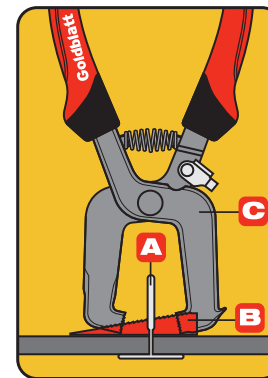


Model#	Size-in.	Size-mm
G02743	6 x 3 x 8-5/8	152 x 76 x 220
Replacement Blade		
G02755	2PK 1/8-in. Grout Removal Bit	

PaceSetter

TILE LEVELING SYSTEM

- Creates perfectly leveled surfaces for both floor and wall tiles
- The tile leveling system includes Clips A, Wedges B, and Pliers C
- For tiles between 3/16 in. and 7/16 in. thick
- Provides narrow 1/16 in. grout line
- Pliers are drop forged steel for durability



Model#	Des.	QTY
G02158	Clips A	250
G02159	Wedges B	250
G02160	Pliers C	1PK

2-IN-1 PRO TILE SPACERS

- Spacer sits on top tile for fast and easy installation and removal
- See-through design for accurate tile alignment
- Double-sided design with different sizing on both sides

Model#	Size-in.	Size-mm	QTY
G02330	1/8 x 1/4	3 x 6	250
G02331	1/16 x 3/16	1.6 x 4.5	250
T Spacer			
G02332	1/8 x 1/4	3 x 6	250
G02333	1/16 x 3/16	1.6 x 4.5	250



HARD PLASTIC TILE SPACERS

- Helps evenly space and align wall or floor tiles
- Leave-in design saves time and helps avoid cracks in finished grout
- Color-coded for easy distinction between sizes
- Contractor pack comes in resealable container



Model#	Size-in.	Size-mm	QTY
Hard Plastic			
G02334	1/16	1.6	250
G02335	1/16	1.6	1000
G02339	3/16	4.7	250
G02340	3/16	4.7	1000
G02336	1/8	3	250
G02337	1/8	3	500
G02338	1/8	3	1000
G02386	1/4	6.3	500
G02387	3/8	9.5	500
Leave-in			
G02342	1/4	6.3	500
G02343	3/8	9.5	500



G02339



G02342

PVC TILE SPACERS

- For fast, accurate tile installation and alignment with professional results
- Use for even grout lines and tile spacing
- Floats in water for easy clean-up and re-use
- Color-coded for easy distinction between sizes

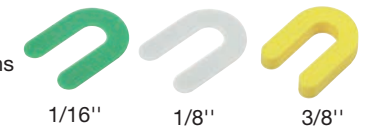
Model#	Size-in.	Size-mm	QTY
G02345	1/16	1.6	250
G02346	1/16	1.6	1000
G02347	1/8	3	250
G02348	1/8	3	500
G02349	1/8	3	1000
G02350	3/16	4.7	250
G02139	3/16	4.7	500
G02352	1/4	6.3	250
G02353	1/4	6.3	500
G02354	3/8	9.5	250
G02389	1/2	12.7	250



PaceSetter

HORSESHOE TILE SPACERS

- Great for spacing and aligning tile & stone
- For both horizontal and vertical tile installations
- Injection molded construction will stand up to heavy loads
- Color-coded for easy distinction between sizes
- Shims are reusable and packed in convenient plastic storage container



Model#	Size-in.	Size-mm	QTY
G02140	1/16	1.6	500
G02356	1/8	3	250
G02094	3/8	9.5	100



STAINLESS STEEL SPACER REMOVER

- Allows easily remove tile spacers prior to grouting
- Heavy gauge curved stainless steel blade for strength and durability
- Non-scruff rubber bumper acts as a fulcrum and protects edges of tile
- Ergonomic soft grip handle reduces fatigue



G02038

4-IN WALL SCRAPER WITH 5 BLADES

- Used to scrape sub floors and remove wallpaper, grout and paint
- Cast aluminum head and heavy gauge steel shaft
- Ergonomic anti-slip handle
- Blade thickness: 5/16in.



Model#	Size-in.	Size-mm
G02730	4	102
Replacement Blade		
G02733	5PC Wall Scraper Blade	

RAZOR SCRAPER

- Used to scrape sub floors and remove wallpaper, grout and paint
- Metal blade holder and steel shaft
- Soft anti-slip handle
- Comes with 1 blade



Model#	Size-in.	Size-mm
G02051	4	102

ALL PURPOSE SCRAPER

- Shaves all kinds of floor coverings on any type of flooring surface
- Heavy gauge high-carbon steel blade can be sharpened
- 50 in. unbreakable fiberglass handle provides strength and flexibility



Model#	Size-in.	Size-mm
G02152	6	152
G02153	12	304

DEMOLITION SCRAPER

- Dual hardened steel blade can easily be converted from 3 in. to 5 in. width
- Re-sharpenable hardened steel blade
- Galvanized steel ergonomic handle with soft grip end
- Great for removing tile, wood, laminate, stone and ice
- Handle measures 52-1/4 in. x 1-1/8 in.



Model#	Size-in.	Size-mm
G02731	3-5	76-137

14-IN VINYL SCRAPER

- Rigid blue steel blade is long-wearing
- Blade is replaceable
- 60 in. x 1-1/8 in. steel tube handle
- Used to remove many types of floor coverings from a variety of floor surfaces



Model#	Size-in.	Size-mm
G02104	14	356
Replacement Blade		
G02105	14	356

HEAVY DUTY FLOOR SCRAPER

- Shaves all kinds of floor coverings on any type of flooring surface
- All steel 4-ft T-Handle with foot peg for better leverage and durability
- Heavy gauge high-carbon steel 7 in. blade is replaceable



Model#	Size-in.	Size-mm
G02161	7	178
Replacement Blade		
G02142	7	178

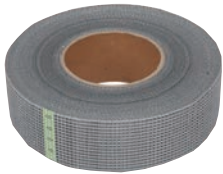
- The steel blade is extremely tough and can withstand years of use
- 24 in. unbreakable fiberglass handle provides strength and flexibility
- Closed D grip for secure holding, pushing and pulling
- Blade measures 15 in. width by 19 in. height



Model#	Size-in.	Size-mm
G02165	24	610

ALKALI-RESISTANT CEMENT BOARD TAPE

- Fiberglass mesh self-adhesive tape
- Alkaline resistant for long-term performance
- Resists tears and is shrink resistant



Model#	Size-ft	Size-m
G02317	300	90
G02041	50	15

CEMENTBOARD SCREW

- Ideal for attaching cementboard to wood and light-gauge steel studs
- Ruspert® coating provides protection against rust and corrosion
- Deep high-low threads allow quick entry and provide maximum holding power



Model#	Size-in.	Size-mm	QTY
G02313	1-1/4	32	200
G02316	1-1/4	32	800
G02314	1-5/8	41	150
G02315	1-5/8	41	600

HEAVY DUTY INDOOR/OUTDOOR PUSH BROOM

- Long-lasting soft PET bristles resist stains and odors
- Extra thick bristles great for heavy duty outdoor use
- Durable 24 in. hardwood block with 60 in hardwood handle
- Industrial strength steel brace for added strength and durability



Model#	Size-in.	Size-mm
G02164	24	610

INDOOR/OUTDOOR PUSH BROOM

- Great for medium to rough textured outdoor surfaces
- Medium stiff black plastic center bristles with border of soft green plastic bristles
- Durable 18 in. foam plastic block with 60-in steel handle



Model#	Size-in.	Size-mm
G02163	18	459

SUCTION CUP

- For maneuvering non-porous, smooth tiles, marble, granite and glass during installation
- 4-1/2 in. diameter rubber suction cup is heavy duty and durable
- Lock and release handle creates strong vacuum suction
- Holds up to 15 lbs



Model#	Size-in.	Size-mm
G02092	4-1/2	114

TRIPLE SUCTING CUP

- For maneuvering non-porous, smooth tiles, marble, granite and glass during installation
- 4-1/2 in. diameter rubber suction cup is heavy duty and durable
- Lock and release handle creates strong vacuum suction
- Holds up to 100 lbs



Model#	Size-in.	Size-mm
G02321	10 x 10	254 x 254

TILE & COUNTER BRUSH

- Used to clean residual grout film from ceramic tile
- The white polypropylene bristles are soft yet durable and are 2-1/2 in. long
- Bristles are staple set in clear lacquered hardwood block



Model#	Bristles length-in.	Bristles length-mm
G02150	2-1/2	64

PRO TILE AND GROUT BRUSH

- Heavy duty grout brush is great for cleaning tiles and grout lines
- Nylon bristles can be used in wet or dry conditions
- Resistant to stains and odors
- Extra strong tapered bristles cut deep into grout joints to remove mold and mildew
- Soft-grip angled handle allows for maximum scrubbing power



Model#	Desc.
G02045	Pro Tile And Grout Brush

SCRUB FLOAT WITH PADS

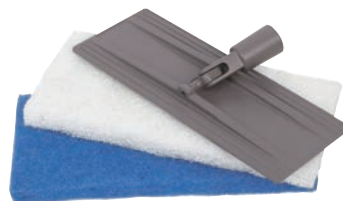
- Clean all types of grout films including tough epoxy films from tile without damaging the grout joint
- The hook & loop backing makes changing pads quick and easy
- Easy to clean by simply rinsing with water
- Large ergonomic soft grip handle



Model#	Size-in.	Size-mm
G02024	10 x 4-1/2 x 1	254 x 114 x 25
Replacement Pad		
G02026	White Scrub Pads, Fine	
G02027	Blue Scrub Pads, Medium	
G02032	Green Scrub Pads, Medium Coarse	
G02033	Black Scrub Pads, Coarse	

POLE SCRUB KIT

- Clean all types of grout films without damaging the grout joint
- Easy to clean by simply rinsing with water
- Includes: pole scrub head; white scrub pad; blue scrub pad
- Use with a standard threaded handle (not included)



Model#	Size-in.	Size-mm
G02028	10 x 4-1/2 x 3/4	254 x 114 x 19

PaceSetter

MICROFIBER POLISHING SPONGE

- Ideal for removal of grout haze and final polishing of tile
- Microfiber fingers lift and trap dirt, grease, dust, and other particles
- Inside stitched to ensure the edges will never rough the surface



Model#	Size-in.	Size-mm
G02358	7-1/2 x 5-1/2 x 2	191 x 140 x 51

GROUT SPONGE

- Professional premium sponge for grouting and clean up
- Unique hydrophilic properties for durability and high water holding capacity
- Approx. dimension: 7-1/2 in. x 5-1/2 x 2 in.



G02162

Model#	QTY	Size-in.
G02162	1	7-1/2 x 5-1/2 x 2
G02359	3	7-1/2 x 5-1/2 x 6

GROUT CLEAN UP SPONGE

- Professional premium dual-purpose sponge for grouting and clean up
- Dual surfaces for both scrubbing and cleaning purposes
- Unique hydrophilic properties for durability and high water holding capacity
- Approx. dimension: 7-1/2 in. x 5-1/2 x 2 in.



G02089

Model#	QTY	Size-in.
G02089	1	7-1/2 x 5-1/2 x 2
G02900	3	7-1/2 x 5-1/2 x 6

CHEESE CLOTH

- For removing grout haze after tile installation
- Cheese cloth is made of 100% cotton and is approx. 5sq. yards
- Professional-grade fine mesh



Model#	Dsec.
G02093	Cheese Cloth

PaceSetter

ALL PURPOSE MICROFIBER CLOTH

- Microfiber fingers lift and trap dirt, grease, dust, and other particles
- Dual microfiber surfaces for both cleaning and polishing purposes
- Ideal for grouting, cleaning and polishing tile
- Towel measures approx. 18 in. x 18 in.



Model#	Size-in.	Size-mm
G02029	18X18	459x 459

PaceSetter

MULTI-PURPOSE BUCKET

- Durable all purpose translucent bucket
- Features ounce and metric measurements
- Reinforced rings around the top to prevent distortion



G02319

G02318

Model#	Quart	Size-L
G02018	5	4.73
G02019	10	9.46

PaceSetter

GROUT SEALER APPLICATOR BOTTLE

- Easily applies grout sealer to floor, wall and counter top grout joints
- Contains two wheels (1/8 in. and 1/4 in.)
- 1/8 in. wheel for mosaic and tightly spaced floor tiles; 1/4 in. wheel for larger joints
- Bottle capacity: 12 oz



Model#	Desc.
G02030	Grout Sealer Applicator Bottle

PaceSetter

CERAMIC TILE INSTALLATION TOOL KIT

- All the basic tools needed to install ceramic tile on floors, walls and countertops
- Kit contains: A pair of gloves, sponge, notch trowel 1/4 in. x 3/8 in. x 1/4 in. grout float, tile nipper, bucket
- Also include tile instruction manual for beginners



Model#	Desc.
G02042	Ceramic Tile Installation Tool Kit

PaceSetter



TILE DRILL BIT SYSTEM

- Used to drill through ceramic, porcelain, marble and granite
- Offers the necessary lubrication to extend the life of the drill bit and secure positioning for quick and accurate cutting
- Included : carbide drill bit, water collection cup, drill guide sleeve, mounting tape (8 PC)

Model#	Size-in.	Size-mm
G02716	5/16	8
G02002	1/4	6
Replacement Tape		
G02004	12PK Mounting Tape	

PaceSetter



TILE HOLE SAW SYSTEM

- 1-3/8 in. diameter hole saw for cutting holes for faucets and shower head pipes when installing tile
- Diamond grit cutting rim cuts ceramic, porcelain, marble and granite
- Offers the necessary lubrication to extend the life of the drill bit and secure positioning for quick and accurate cutting
- Included : 1-3/8 in. diamond drill bit, water suction cup, mounting tape (6 PC)

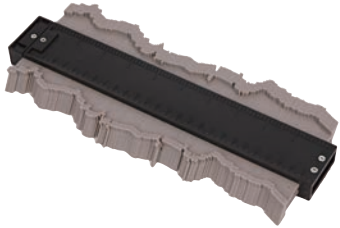
Model#	Size-in.	Size-mm
G02717	1-3/8	35
Replacement Tape		
G02006	12PK Mounting Tape	

PaceSetter



CONTOUR GAUGE

- Used for easy transfer of irregular shapes to tile for a perfect fit
- Traces shape exactly for precise marking
- Lightweight plastic construction
- Contour gauge is 10 in. by 4 in. with a maximum depth of 1-1/4 in.



Model#	Size-in.	Size-mm
G02102	10	254

PaceSetter

CHINA MARKERS

- Ideal for marking tile, glass, marble, porcelain, granite, and etc.
- Tear string for easy sharpening
- Water-resistant marking
- 3 colors available: red, black and yellow



Model#	Desc.
G02745	3PC Black, Red and Yellow

PaceSetter

DUAL GRIT SANDING STONE

- Great for smoothing rough edges of ceramic tile, marbles and bricks
- 60-grit (medium) on 1 side and 90-grit (fine) on 1 side
- Measures 6 in. x 2 in. x 1 in.



Model#	Size-in.	Size-mm
G02121	6 x 2 x 1	152 x 51 x 25

PaceSetter

GROUT BAG

- Used for holding and dispensing grout or mortar
- High strength fabric-backed vinyl bag
- Molded-in tip can be cut to desired opening
- Easy to clean up



G02744

PaceSetter

VINYL TILE VCT CUTTER

- For quick, repetitive cutting of all brands of vinyl tiles and VCT
- Long life hardened steel blades
- Built in measuring guide
- Cuts vinyl tile up to 12 in. x 12 in. and diagonally cuts tiles up to 8 in.
- Locking blade and convenient handle makes transport easy



Model#	Size-in.	Size-mm
G02155	12	305

PaceSetter

LAMINATE CUTTER

- Cuts laminate planks up to 8 in. wide and 10mm thick
- Dust-free cutting for quick cleanup
- Heavy duty steel frame for maximum stability
- V support keeps planks level while cutting



Model#	Size-in.	Size-mm
G02156	8	200



PaceSetter

STAINLESS STEEL LINOLEUM / VINYL KNIFE

- Made of heavy gauge stainless steel
- Precisely dual honed edge for great sharpness
- Serrated blade for easy cutting and trimming
- Extra large soft grip handle provides firm grip



Model#	Size-in.	Size-mm
G02323	4-1/2	114

EXTENSION HANDLE ROLLER

- Use to roll vinyl floor covering, carpet and wall covering
- Ball-bearing for smooth and easy rolling
- Second handle for great leverage
- Twist-lock steel handle extends from 17 to 27 in.
- Non-marking, 7-1/2 in. wide segmented rollers



Model#	Desc.
G02325	Extension Handle Roller

3-IN PRO PULL BAR

- Use to gently pull together planks of tongue-and-groove, laminate or wood flooring
- Durable steel
- Ideal for use in tight spaces, such as against a wall. Use with a mallet



PaceSetter

Model#	Desc.
G02055	3 in. Pro Pull Bar

LAMINATE AND WOOD FLOORING INSTALLATION KIT

- For quick laminate and hardwood flooring installation
- Heavy duty tapered pull bar designed to pull planks together in tight areas
- Reusable expansion spacers for whenever floors require 5/16 in. or less expansion space
- Solid heavy duty tapping block evenly distributes force from hammer when tapping planks together



Model#	Desc.
G02149	Laminate And Wood Flooring Installation Kit

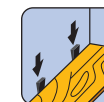
PaceSetter

INSTALLATION SPACERS

- Provide the correct expansion gap at the perimeter of the room
- Use these spacers for whenever floors requires 5/16 in. or less expansion space
- Double-sided stepped spacers



Model#	QTY
G02326	30
G02327	100



PaceSetter

TAPPING BLOCK

- For quick laminate and hardwood flooring installation
- Use to gently push tongue-and-groove planks together
- Taps together laminate and wood flooring
- Polypropylene body offers durability
- Plastic handle provides a sturdy grip



PaceSetter

Model#	Size-in.	Size-mm
G02329	20	510

COMBINATION TAPPING BLOCK

- For quick laminate and hardwood flooring installation
- Used to install all brands of tongue and groove flooring
- Durable polypropylene construction



PaceSetter

Model#	Desc.
G02328	Combination Tapping Block

10.8 AMP ELECTRIC MIXER

Model#	G09603
Power	120 V ~ 60 Hz, 10.8Amp
No-load speed	I: 0-480 rpm ; II: 0-800rpm
Mixing paddle	4-3/4" (120 mm)
Tool fitting/Clamp thread	M14



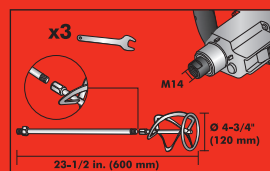
G09603

- 2 speed gearbox and electronic speed controller optimize the mixing of each material
- Safety On/Off switch with lock-on button for easy continuous operation
- M14 thread for direct connection of mixer to paddle

9 AMP ELECTRIC MIXER



Model#	G09602
Power	120 V ~ 60 Hz, 9 Amp
No-load speed	0-600 rpm
Drill capacity	1/2" (13 mm)
Tool fitting/Clamp thread	M14 x 2
Mixing paddle(Ø max.)	4-3/4" (120 mm)



SPIRAL MIXER

- High quality plated steel construction
- Ideal for fast mixing of all kinds of materials, from paint to cement
- Requires 3/8 in or 1/2 in. drill chuck with a minimum 6 AMP motor and maximum of 800 RPM

Model#	Size-in.	Size-mm
G02043	15-3/4 x 3-1/8	400 x 79
G02044	23-3/4 x 4-5/8	603 x 117



DELUXE MIXER

- High quality plated steel for easy clean up
- Shaft diameter 3/8 in., length 23-3/8 in., blade width 5 in.
- Used to mix grouts, thin-sets and other setting materials
- Requires 1/2 in. drill with a minimum 6 AMP motor and maximum of 800 RPM



Model#	Size-in.	Size-mm
G02054	23-5/8 x 5	600 x 127

SWIFT MUD MIXER

- Rugged die cast aluminum paddle
- Ball head design prevents bucket damage
- Requires 1/2 in. drill with a minimum 7 AMP motor and maximum of 800 RPM
- Ideal for mixing drywall mud and texture materials



Model#	Size-in.	Size-mm
G15303	30-3/8 x 8-1/4	772 x 210

TWO WHEEL MUD MIXER

- Made of heavy plated steel, stands up to heavy use
- Unique 2-wheel design breaks up lumps faster
- Wheels are removable making clean up easier
- Can use with 1/4 in. 3/8 in or 1/2 in. drill with a maximum of 800 RPM

Model#	Shaft size-in.	Shaft size-mm
G05021	1/4 x 11	6 x 279



DUAL-HEAD WORK LIGHT WITH TRIPOD



Model#	G09505
Light output	2000 Lumens
Input Voltage	120V-60Hz
Input Power	26 Watt



WORK LIGHT WITH TRIPOD



Model#	G09506
Light output	3000 Lumens
Input Voltage	120V-60Hz
Input Power	42 Watt



PORTABLE WORK LIGHT

LED
HIGH-POWERED

800
LUMENS

WET
LOCATION USE

1M
IMPACT
RESISTANT

RUGGED NYLON BODY
FOR BETTER IMPACT RESISTANCE

PIVOTING HEAD FOR
VARYING BEAM DIRECTION

6-FT POWER CORD
WITH UL PLUG

COB LED BULB
NEVER NEEDS
REPLACING

DURABLE LENS FOR
BETTER LIGHT

ETL LISTED US
Intertek
G09501



Model#	G09501	G09502
Light output	800 Lumens	1500 Lumens
Input Voltage	120V~60Hz	120V~60Hz
Input Power	11.5 Watt	23 Watt

WORK LIGHT

LED
HIGH-POWERED

SOFT CORNERS

EASY CARRY

HIGHLY ENERGY
EFFICIENT SMD LED

COMPACT DESIGN

RUGGED BODY WITH
OVERMOLDED
BUMPERS

G09503

G09504

Model#	G09503	G09504
Light output	1000 Lumens	3000 Lumens
Input Voltage	120V~60Hz	120V~60Hz
Input Power	13 Watt	42 Watt

ETL LISTED US
Intertek



COMPACT TRIPOD

20^{50,8 cm}
INCH - **60**^{152,4 cm}
INCH

- Compact and light weight



Model#	G09507
Mount threading	1/4-20 in.
Extend able height	20-60 in.
Size-mm	508-1524

EXTENSION CORD



G09521



G09512

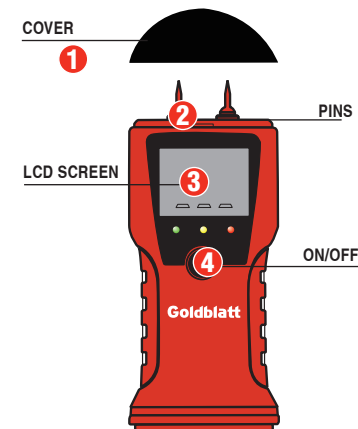
Model#	Size-in.	Size-ft	SJTM	Maximum	Insulated
G09521	12/3	2	125v	1875w	300v
G09520	12/3	25	125v	1875w	300v
G09512	12/3	50	125v	1875w	300v

MOISTURE METER

- Ideal for wood and building material moisture measurement
- LCD display with back light
- High accuracy +/- 2%

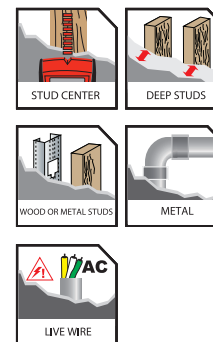


Model#	G09400
Wood	8%-50%
Building Material	6%-33%
Temperature	32°F - 104°F (0° C - 40° C)



STUD FINDER

- Locate the center of wood or metal studs
- LCD display with backlight
- "V" marker groove for more accurate marking of stud center location
- Rubber handle for non-slip grip
- 3 scan modes locate the studs in different depth: 1/2 in. (13mm), 1 in. (25mm) or 1-1/2 in. (38mm)
- Metals mode for scanning metal pipes or rebar: 3 in. (76 mm)
- AC mode for detecting the presence of live electrical wiring: 2 in. (51 mm)
- Requires one 9-volt battery (not included)



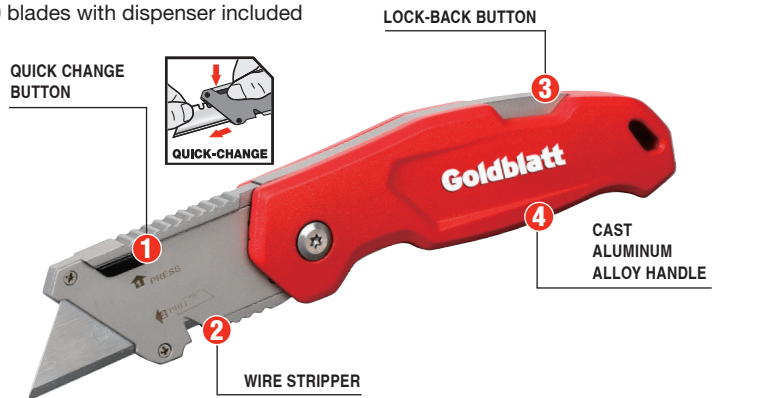
G09401

HEAVY DUTY

FOLDING LOCK BACK KNIFE

G08210

- Quick load blade changing system for fast blade changes
- Lock back folding knife for easy carrying
- Heavy duty die cast aluminum alloy construction for improved durability
- 10 blades with dispenser included



GENERAL PURPOSE UTILITY BLADES

- Features high end alloy steel for up to 3X longer life
- Precise double-honed edges
- Fits with most standard utility knives
- 100PK Contractor Pack comes with unique blade dispenser



Model#	Desc.
G08283	100pack
G08282	10pack

1 BLADES

5 BLADES

QUICK CHANGE

FIXED BLADE UTILITY KNIFE

G08209

- Features quick blade access and change design
- Die cast aluminum alloy construction for durability
- Soft grip handle for improved grip and control
- 5 replacement blades storage in handle



SNAP OFF KNIFE

- Features heavy duty aluminum construction
- Heavy gauge stainless steel flute for durability
- Built-in blade snapper
- Works with most standard snap off blades



G08203



G08204

Model#	Size-mm
G08203	9
G08204	18

SNAP OFF BLADE

- Features high end alloy steel for up to 3X longer life
- Precisely double-honed edges for better sharpness
- Fits with most snap off utility knives



G08214



G08215

Model#	Size-mm	Desc.
G08214	9	5pack
G08215	18	5pack

MULTI
FUNCTION

MULTI-USE LONG NOSE PLIERS

These multi-functional long nose pliers possess a host of features that include ergonomic bi-material grips, built-in wire strippers that can strip stranded and solid wire. Plus, this is a versatile crimping tool. These pliers are hot forged from high alloy steel and heat treated to achieve maximum strength and durability



Model#	Desc.	Strips & Cuts	Knife Length
G08002	7" Multi-use Long Nose Pliers	2-18 AWG solid & 14-20 AWG stranded	3/4"(20mm)
G08003	8" Multi-use Linesman Pliers	12-18 AWG solid & 14-20 AWG stranded	3/4"(20mm)
G08004	7" Multi-use Diagonal Pliers	2-18 AWG solid	1/2"(12.7mm)



HEAVY
DUTY

UTILITY SHEAR

3X CUTTING
STRENGTH
DROP FORGED BLADE

The only fully drop forged steel scissors on the market. Heavy duty drop forged construction and full length steel blades that extends through the handle make this tool 3 times stronger than other utility shear on the market. Spring-loaded handle for reduced hand fatigue after repeated cuts.



Model#	Dsec.
G08208	8" Heavy Duty Utility Shear



CLAW HAMMER W/HICKORY HANDLE

- High grade forged hammer steel
- Comfortable top grade solid hickory handle
- Perfectly balanced and superior in every respect



Model#	Spec.
G08301	24oz
G08300	16oz

DOUBLE-FACE SOFT HAMMER

- Features two oversized solid rubber facings for long term use
- Minimizes accidental marking of floors and walls
- Built with superior feel and balance
- Head is securely mounted to a comfortable hickory handle



Model#	Spec.
G08302	24oz

RUBBER Mallet

- Built with the perfect feel and balance
- Head is securely mounted to a comfortable hardwood handle
- Ideal for use with tapping block or for any applications where a protective rubber head is needed



Model#	Spec.
G02145	32oz
G02106	24oz
G02107	16oz

BASE MOLDING LIFTER

- Forged from top quality, tempered hex steel bar for ultimate strength
- Sharp, precisely-machined chisel ends slide into molding and cracks
- High-leverage hook end with deep V nail slot
- Powered coating finish resists corrosion



Model#	Size-in.	Size-mm
G02344	10-1/2	267

PRY BAR

- Versatile design can pull nails, pry, lift and scrape
- Forged from top quality, tempered tool steel
- Beveled nail slot on both ends



Model#	Size-in.	Size-mm
G08363	15	382
G08364	12	306

PROFESSIONAL LASER MEASURE

Designed for the professional tradesman



Easier and faster than a tape measure
 Compact, lightweight
 Front/bottom measure base switch
 Push ON/OFF button for instant continuous measuring

	Continuous		Battery Indicator
	Measure Reference		Data Storage
	Reverse Display		Volume
	Unit Switch		Area
	Data Deleted		Auto Power Off
	3 Point Pythagoras		Addition / Subtraction
	2 Point Pythagoras		Laser Dot Auto Off

50FT/15M LASER DISTANCE MEASURE



Model#	G09200
Range	9/16ft- 50ft (0.17-15M)
Accuracy	+/- 1/8" (3mm)
Auto power off	180 seconds
Unit	Metric and Imperial
Dimension	4.6" x 1.73" x 1"

65FT/20M LASER DISTANCE MEASURE



Model#	G09201
Range	5/32ft- 65ft (0.05-20M)
Accuracy	+/- 1/8" (3mm)
Auto power off	180 seconds
Unit	Metric and Imperial
Dimension	4.6" x 1.73" x 1"

FLOOR LINE LASER

- Measure distance 30ft/10m
- Vial accuracy : 0.057 degree/0.001in./1in.
- Laser accuracy: +/-3/8 in./30 ft
- Can scan the entire floor within minutes instead of spot checks
- Fast layout markup
- Working directly on the laser line is more accurate and saves time
- 2xAA Energizer Alkaline batteries



Model#	G09206
Range	30ft/10m
Vial accuracy	0.057 degree / 0.001in./1in.
Laser accuracy	+/- 3/8"/30ft

100FT/30M LASER DISTANCE MEASURE



Model#	G09202
Range	5/32ft- 100ft (0.05-30M)
Accuracy	+/- 1/8" (3mm)
Auto power off	180 seconds
Unit	Metric and Imperial
Dimension	4.6" x 1.73" x 1"

135FT/40M LASER DISTANCE MEASURE



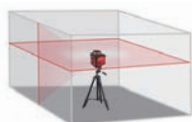
Model#	G09203
Range	5/32ft- 135ft (0.05-40M)
Accuracy	+/- 1/8" (3mm)
Auto power off	180 seconds
Unit	Metric and Imperial
Dimension	4.6" x 1.73" x 1"





SELF-LEVELING 360-DEGREE CROSS LINE LASER

- Leveling range: +/- 4 degree
- Robust over-molded construction - ensures water/dust protection and sure grip for dependable operation
- Easy access battery box-change batteries quickly



Model#	G09207
Range	50ft (15M)
Accuracy	+/- 5/32" / 30FT (±4mm/10m)

CROSS LINE LASER LEVEL

- Self Leveling: Shines bright horizontal & vertical lines onto flat surfaces
- LED indicator lights turns red when conditions are out-of-level
- Compact, lightweight design
- Can be wall or tripod mounted for quick and easy setup
- Leveling range: +/- 4 degree

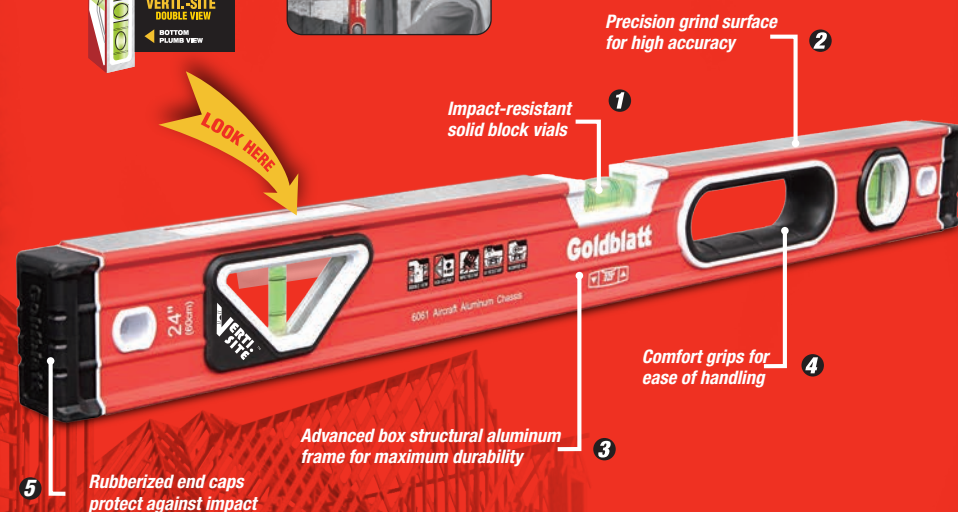


Model#	G09208
Range	30ft (10M)
Accuracy	+/- 5/16" (8mm)
Dimension	2-1/4" x 2-1/8" x 6-3/8"

PATENT

PROFESSIONAL ALUMINUM BOX BEAM LEVEL

An unobstructed view of the vial when plumbing a post or frame is a challenge for traditional levels. The new patented Goldblatt Vertical Site™ technology provides a clear view of the vial from different angles for easier use and better accuracy.



DOUBLE VIEW BOX BEAM LEVEL

- Patented verti-site design can be read from front or side
- .029° or .0005 inches vial accuracy in top and bottom positions
- Advanced structural aluminum frame for maximum durability
- Rubberized end caps protect against impact
- Solid block acrylic Verti-site™ breaking, leaking and fogging
- UV-resistant magnified center vial for high visibility
- Comfort grips for ease of handling
- Machined edges for accurate readings



Model#	Size-in.	Size-mm
G09001	24	612
G09003	36	918
G09002	48	1173

LIGHTED ALUMINUM TORPEDO LEVEL

- Aircraft grade aluminum
- Lighted system provides maximum visibility
- 3-minute auto shut-off saves battery life
- Machined edges for accurate readings
- Rare earth magnets for maximum holding power
- V-groove edge for use on round surfaces
- Patented Verti-site™ design can be read from front or side
- .029° or .0005 inches vial accuracy in bottom position
- Requires 2AAA batteries



Model#	Size-in.	Size-mm
G09006	9	229

ALUMINUM DIE-CAST TORPEDO LEVEL

- Patented Verti-site™ design can be read from front or side
- Accurate to .029° or .0005 inches
- Aircraft grade aluminum
- Machined edges for accurate readings
- Rare earth magnets for maximum holding power
- V-groove edge for use on round surfaces



Model#	Size-in.	Size-mm
G09005	10	255

ALUMINUM TORPEDO LEVEL

- For use in measuring bends in conduit
- Aircraft grade aluminum
- Machined edges for accurate readings
- Rare earth magnets for maximum holding power
- V-groove for pipe and conduit work
- Three points of contact for superior hold to conduit
- Patented Verti-site™ design can be read from front or side
- .029° or .0005 inches vial accuracy in bottom position



Model#	Size-in.	Size-mm
G09008	6	153

ALUMINUM TORPEDO LEVEL

- Eliminates "dogleg" in conduit bends
- Aircraft grade aluminum
- Machined edges for accurate readings
- Rare earth magnets for maximum holding power
- V-groove for pipe and conduit work
- Three points of contact for superior hold to conduit
- Patented Verti-site™ design can be read from front or side
- .029° or .0005 inches vial accuracy in bottom position



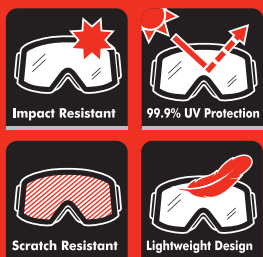
Model#	Size-in.	Size-mm
G09009	3	76



Welcome to Goldblatt Tools

SAFETY GEAR
PROFESSIONAL PERFORMANCE

4-PACK SAFETY EYE WEAR



G07043

- Contoured, flexible temples for comfortable and snug fit
- Lightweight frame, weight less than 1 oz
- Scratch resistant polycarbonate lens provides 99% UV protection
- Meets ANSI Z871-2010 requirements

OUTDOOR SAFETY EYEWEAR

- Contoured, flexible temples for comfortable and snug fit
- Lightweight frame, weight less than 1 oz
- Tinted lenses are ideal for working outdoors
- Meets ANSI Z871-2010 requirements



G07045

CHEMICAL SPLASH AND IMPACT GOGGLES

- Flexible design helps goggles conform to facial contours
- Very light, complete eye protection
- Hooded Vents are designed to help reduce fogging
- Scratch resistant polycarbonate lens provides 99% UV protection
- Meets ANSI Z871-2010 requirements



G07046

PROJECT SAFETY KIT

- Safety goggle meets ANSI Z871-2010 Requirements
- Reusable earplugs NRR=32 dB
- NIOSH approved Particular Respirator with exhalation valve



Model#	Desc.
G07032	Project Safety Kit

N95 RESPIRATOR (3-Pack)

- Use for non-harmful dusts from sanding, grinding, sawing and insulating particles
- With a 95% filter efficiency against solid particles
- NIOSH approved N95
- Pack of 3 Masks



PaceSetter

Model#	Desc.
G07024	N95 Painter

N95 VALVED RESPIRATOR (3-Pack)

- Use for non-harmful dusts from sanding, grinding, sawing and insulating particles
- With a 95% filter efficiency against solid particles
- NIOSH approved N95
- Exhalation valve to make it easier to breathe through
- Pack of 3 Masks



PaceSetter

Model#	Desc.
G07025	N95 Valved Respirator

GEL COMFORT PROFESSIONAL KNEE PADS

- Soft gel core and durable EVA foam padding cushion your knees for hours on end
- Non-marring poly tread caps allows you to move back and forth without damaging the surface underneath
- Ballistic 600D poly material for long-lasting strength and durability
- Self-adhesive hook & loop straps offer quick and convenient removal



G07041

MAX FLEX KNEE PADS

- Non-skid, heavy duty thick poly shield for stability and long lasting
- Ballistic 600D poly material for long-lasting strength and durability
- Slip-buckle clips for secure and easy fix and release



G07039

CUSHION GRIP KNEE PADS

- Ballistic 600D poly material for long-lasting strength and durability
- Water-resistant knee pad for dry comfort
- Slip-buckle clips for secure and easy fix and release



G07037

KNEE PADS

- Ballistic 600D poly material for long-lasting strength and durability
- Self-adhesive hook & loop straps offer quick and convenient removal
- Great for working on surfaces like tile, wood, carpet and vinyl



G07038

HEAVY DUTY KNEELER BOARD

- Used to provide the knees comfortable support and protection
- Tray is made from durable, lightweight polypropylene
- Soft pad is made from high density EVA for durability and long wearing
- Extra large, ergonomic soft grip handles
- Makes finishing concrete, laying carpet and tile, auto-repairs, garden projects and plumbing projects easier on your knees



Model#	Size-in.	Size-mm
G06966	18-7/8 x 13-5/8	480 x 345

FOAM KNEE PADS

- Comfortable, lightweight foam knee pads
- Water-resistant knee pad for dry comfort
- Easily adjustable elastic strap for a tight & secure fit



G07036

FOLDING EARMUFF

- Provides comfortable hearing protection with the convenience of portability
- PU foam filled ear cushions offer comfort and NRR 25 dB
- Durable stainless steel headband resists bending and warping



G07040

1000-FT YELLOW CAUTION TAPE

- Designed to be used as a warning at job sites, road work and more
- Black lettering stands out making the message highly visible
- Bright color alerts to danger and off-limits areas
- Made of durable plastic polymer for weatherproof



G02322

PaceSetter

DEMOLITION GLOVES

- Form-fitted for added dexterity and reduced fatigue
- Breathable Spandex back with anti-vibration pads on fingers and palms
- Comfortable wing closing strap for a secure fit



G07035

HEAVY DUTY RUBBER GROUTING GLOVE

- Heavy duty latex for strong puncture and chemical resistance
- Unique textured palm for positive gripping
- Soft comfortable flock lining offer warming and moisture wicking
- One size fits all



G07048

RUBBER GROUTING GLOVES

- Protects hands from grout, adhesives, paint, grease, cleaners and sealers
- Long wearing synthetic rubber resists tears and splits
- One size fits all



G02098

PaceSetter

50-COUNT DISPOSABLE NITRILE GLOVES

- Powder free disposable Nitrile gloves
- Good resistance to oil, grease, chemicals and puncture
- Great for the grouting tile and general household use
- Ambidextrous & beaded cuff



G07022

PaceSetter

MODEL NO.	PAGE NO.	MODEL NO.	PAGE NO.	MODEL NO.	PAGE NO.	MODEL NO.	PAGE NO.	MODEL NO.	PAGE NO.
G01126	16	G02046	48	G02315	63	G02385	47	G02745	69
G01126	16	G02047	48	G02316	63	G02386	59	G02755	58
G01162	18	G02048	3	G02317	63	G02387	59	G02757	53
G01165	18	G02049	48	G02321	63	G02389	60	G02758	51
G01210	17	G02050	48	G02322	96	G02391	50	G02761	52
G01248	19	G02051	61	G02323	71	G02392	50	G02762	49
G01421	18	G02052	49	G02325	71	G02404	56	G02770	44
G01618	15	G02053	49	G02326	72	G02411	47	G02771	43
G01620	15	G02054	74	G02327	72	G02413	47	G02772	42
G01622	15	G02055	71	G02328	72	G02414	47	G02773	43
G01651	15	G02089	66	G02329	72	G02416	47	G02774	40
G01678	14	G02092	63	G02330	59	G02422	47	G02775	41
G01679	14	G02093	66	G02331	59	G02423	47	G02900	66
G01685	14	G02094	60	G02332	59	G02424	47	G03070	38
G01689	13	G02098	97	G02333	59	G02461	48	G03072	38
G01690	13	G02102	69	G02334	59	G02462	48	G03073	38
G01691	13	G02103	56	G02335	59	G02463	48	G03123	38
G01910	16	G02104	62	G02336	59	G02464	48	G03127	38
G01930	16	G02105	62	G02337	59	G02466	48	G03407	3
G01932	16	G02106	85	G02338	59	G02473	48	G03463	2
G02001	56	G02107	85	G02339	59	G02474	48	G03910	3
G02002	68	G02121	69	G02340	59	G02475	48	G05000	25
G02003	56	G02122	56	G02342	59	G02650	50	G05001	25
G02004	68	G02137	48	G02343	59	G02651	50	G05002	25
G02006	68	G02139	60	G02344	85	G02653	50	G05003	25
G02007	53	G02140	60	G02345	60	G02654	50	G05004	25
G02008	53	G02142	62	G02346	60	G02656	50	G05005	25
G02009	53	G02145	85	G02347	60	G02657	50	G05006	25
G02010	54	G02149	72	G02348	60	G02658	50	G05007	25
G02018	67	G02150	64	G02349	60	G02659	50	G05008	25
G02019	67	G02151	38	G02350	60	G02660	50	G05009	25
G02024	65	G02152	61	G02352	60	G02662	50	G05010	25
G02026	65	G02153	61	G02353	60	G02663	50	G05011	22
G02027	65	G02154	57	G02354	60	G02716	68	G05012	22
G02028	65	G02155	70	G02356	60	G02717	68	G05013	22
G02029	66	G02156	70	G02358	65	G02718	54	G05014	22
G02030	67	G02158	58	G02359	66	G02721	51	G05015	23
G02032	65	G02159	58	G02360	48	G02723	51	G05016	24
G02033	65	G02160	58	G02365	47	G02727	15	G05017	26
G02034	52	G02161	62	G02368	51	G02728	15	G05018	26
G02035	51	G02162	66	G02369	8	G02729	24	G05019	26
G02036	57	G02163	64	G02370	51	G02730	61	G05020	26
G02037	57	G02164	64	G02371	52	G02731	62	G05021	74
G02038	60	G02165	62	G02376	48	G02733	61	G05022	28
G02039	37	G02166	37	G02379	47	G02736	55	G05023	29
G02041	63	G02167	37	G02380	48	G02737	55	G05024	30
G02042	67	G02168	37	G02381	48	G02738	57	G05025	36
G02043	74	G02169	37	G02382	48	G02739	57	G05026	30
G02044	74	G02313	63	G02383	47	G02743	58	G05027	35
G02045	64	G02314	63	G02384	47	G02744	69	G05028	29

This image shows a full page of white paper with horizontal dashed lines, typical of primary school handwriting practice paper. The lines are evenly spaced and run across the entire width of the page. There are no margins, text, or other markings present.

Blank lined area for notes on page 101.

Blank lined area for notes on page 102.

Blank lined area for notes on page 103.

Blank lined area for notes on page 104.

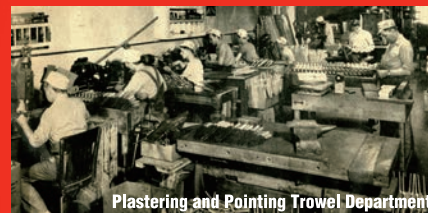
Goldblatt Tool Company History since 1885

Goldblatt's tradition of quality, innovation and satisfaction started with Henry Goldblatt. Born in 1855, Henry emigrated from Russia with dreams of opening his own business in the expanding American West.

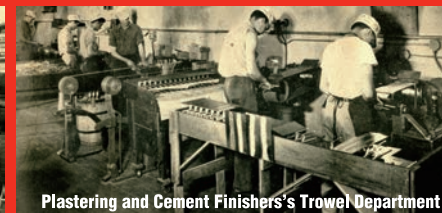
At the age of 29, he founded the H. Goldblatt Tool Company in Kansas City, MO. At the time, this frontier town was booming and Henry sold his products directly to tradesmen and through the mail. Soon, Goldblatt published a tool catalog that successfully promoted his products nationwide.

By the 1920's, Goldblatt had become a leading manufacturer and distributor of tools from coast to coast. Henry loved to work with tradesmen to learn about their needs and the challenges they faced on the job site. He used that learning to create high quality products that made the job easier at a fair and honest price.

GOLDBLATT TOOL FACTORY-VIEWS (Circa 1939)



Plastering and Pointing Trowel Department



Plastering and Cement Finishers's Trowel Department

Quickly the Goldblatt reputation and business grew. Today, in over 100 countries around the world, Goldblatt provides high quality trade tools in masonry, concrete, drywall, tile, and paint – with even more to come. We do it with a simple idea in mind, to create the highest quality products for the trade professional that are also accessible and affordable for the inspired homeowner/do-it-yourselfer.

Decades ago, every Goldblatt professional tool came with an assurance of quality and a warranty to back it up. We still deliver that assurance of quality in our Professional Performance Guarantee. If the professional tool you buy from us does not deliver professional results, return it for replacement or receive your money back. No questions. No hassles. No kidding.

A strong commitment to quality, innovation, and customer satisfaction has been the cornerstone of the Goldblatt brand for over 130 years and that commitment still makes Goldblatt the right tool for the job. With a Goldblatt tool in your hand you can be assured of professional results every time. Henry would be proud.



Headquarters:

Hangzhou GreatStar Industrial Co., Ltd.

No.35 Jiuhuan Road, Jiubao Town, Hangzhou, Zhejiang, China, 310018

US Office:

Goldblatt Industries, LLC

271 Mayhill Street

Saddle Brook, New Jersey 07663, U.S.A

Toll Free: 1.877.876.7562

8:00 a.m. to 5:00 p.m., EST



www.goldblattusa.com

*If any Goldblatt tool fails
to deliver professional
results, return it for a full
money-back refund.*



202208-A5-05